

Specification

CMOS Camera

CMOS CAMERA	
Item NO.	MO-S412
Video system.	CCIR/EIA
Number of Effective Pixels	352X288(CCIR)
	320X240(EIA)
CMOS Image Sensor	1/4" CMOS
Scanning System	2:1 INTERLACE
Synchronization	INTERNAL
Resolution (TV Lines)	240 TV Lines
S/N Ratio	more than 48dB
Minimum Illumination	0.5 Lux / F 1.2
Electronic Shutter	1/50 - 1/6,000
Horizontal Sync Frequency	NTSC(EIA)-15.734kHz / PAL(CCIR)-15.625kHz
Vertical Sync Frequency	NTSC(EIA)-60Hz / PAL(CCIR)-50Hz
Gamma Consumption	0.45
Video Output	1Vp-p , 75ohms Composite
Audio Output	Frequency 20-16000Hz,S/N ratio more than 58dB SPL(at 1000Hz))(Ordering in advance)
Built-In Lens	3.7mm / F2.0
Lens Angle	3.7mm / 58 Degree
Storage Temperature	-30 to 60 Degree C
Working Temperature	-10 to 45 Degree C
Power Source	DC 7 - 12V
Power Current	20mA(max)



MO-S412P



MO-S412G

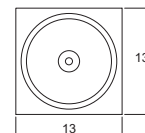
Ordering Information

Dimensions

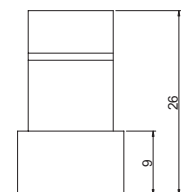
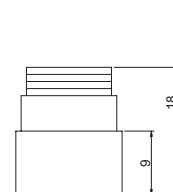
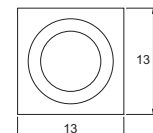
MODEL	MICRO	PIN HOLE	MICROPHONE
MO-S412	3.6mm / F2.0		
MO-S412-3T		3.1mm / F3.4 (SLIM)	
MO-S412-4T		3.9mm / F3.9(SLIM)	
MO-S412-3F		3.7mm / F2.0 (FLAT)	
MO-S412-4F		4.3mm / F2.0 (FLAT)	
MO-S412-4C		4.3mm / F2.0 (CONE)	
MO-S412-3C		3.7mm / F2.0 (CONE)	
MO-S412A	3.6mm / F2.0		
MO-S412A-3T		3.1mm / F3.4 (SLIM)	
MO-S412A-4T		3.9mm / F3.9(SLIM)	
MO-S412A-3F		3.7mm / F2.0 (FLAT)	
MO-S412A-4F		4.3mm / F2.0 (FLAT)	
MO-S412A-4C		4.3mm / F2.0 (CONE)	
MO-S412A-3C		3.7mm / F2.0 (CONE)	

NOTE:
M:Medium resolution , **H**: High resolution
MO-S412 : DC7~12V **MO-SS412** : DC6~10V **MO-SSS412** : DC5V **MO-SV412** : DC3V
MO-S612A : W/Microphone

PIN HOLE LENS



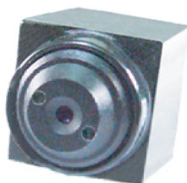
MICRO LENS



Unit: mm (Approx)

Lens unit diameter and height differ for other lenses.Please inquire for details.

Other types



MO-S888

Ultra mini color camera



MO-S1615P

Challenge CCD Image Quality



MO-S1615G

Challenge CCD Image Quality