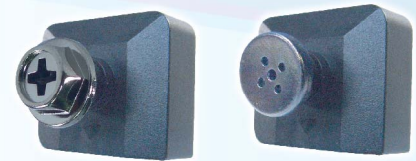


Specification

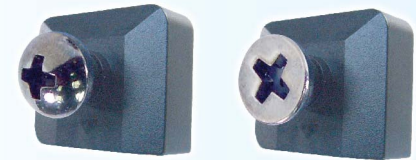
Model	HS-C2xx	
Video system	NTSC / PAL	
Number of effective pixels	NTSC	510 x 492
	PAL	500 x 528
Image sensor	1/4" Color CCD	
Resolution(TV Lines)	360	
S/N Ratio	more than 48dB	
Minimum illumination	0.2 LUX / F1.4	
Electronic shutter	1/50 - 1/120,000	
Horizontal sync frequency	NTSC-15.734kHz / PAL-15.625kHz	
Vertical sync frequency	NTCS-60Hz / PAL-50Hz	
Camera consumption	0.45	
Video output	1Vp-p , 75ohm composite	
Audio output	Frequency 20-16,000Hz , S/N ratio more than 58 SPL(at 1000Hz)(Ordering in advance)	
Built-in lens	4.3mm / F2.0	
Lens angle	68 °	
Storage temperature	-30 to 60 Degree C	
Working temperature	-10 to 45 Degree C	
Power source	DC 5-12V(Standard)	
Power current	70mA	
Dimension (mm)	23 x 20	

Spy CCD Camera



HS-C220

HS-C221



HS-C222

HS-C223



HS-C224

HS-C231

Other mode



MSX-2400B



MSR-A2410B



TXT-BOX

Receiver

MODEL	MRX-2400B	MRX-1200B	MRX-0900B
Channel Frequency	2413 , 2432 2451 , 2470	1080 , 1120 1160 , 1200	910 , 980 1010 , 1040
Video Input	1 Vp-p Composite Video		
Audio Input	2 Vp-p (max)		
Audio Sub Carrier	5.5MHz		
Operating Voltage	DC 5 V		
Power Current	360mA		
Batter Charge Time	2.5Hrs		
Operating Temperature	10-40 Degree C		
Operating Humidity	20-80%		
Dimensions	110mmx67mmx21.5mm		
Weight	117g		

MODEL	MSR-A2410B	MSR-B1210B	MSR-C0910B
Channel Frequency	2413 , 2432 2451 , 2470	1080 , 1120 1160 , 1200	910 , 980 1010 , 1040
Video Input	1 Vp-p Composite Video		
Audio Input	2 Vp-p (max)		
Audio Sub Carrier	5.5MHz		
Operating Voltage	DC 12 V		
Power Current	380mA		
Batter Charge Time	2.5Hrs		
Operating Temperature	10-40 Degree C		
Operating Humidity	20-80%		
Dimensions	21mmx80mmx125mm		
Weight	165g		

Transmitter

MODEL	TXT-AB2	TXT-AB6	TXT-BB1	TXT-BB5
Channel Frequency	2413,2432,2451,2470 (MHz)		1080,1120,1160,1200 (MHz)	
Frequency Deviation	200kHz			
RF Output Power	200mW	600mW	100mW	500mW
Video Input	1 Vp-p75 ohms Composite			
Audio Input	2 Vp-p (max)			
Audio Sub Carrier	5.5MHz			
Charge Voltage	DC 9 V			
Charge Current	800mA			
Output Voltage	DC 12V			
Output Current	400mA(max)			
Capacity	900mAh(DC 9V)			
Operating Temperature	10-40 Degree C			
Operating Humidity	20-80%			
Dimension (mm)	55x70x15	55x86x20	55x70x15	55x86x20

KIT

High Sensitivity 1/4" Color camera (CCIQ)



MO-N1624A



MO-N1623A