

Specification

CMOS Camera

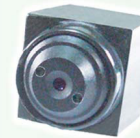
CMOS CAMERA				
Item NO.		MO-S408	MO-S788	MO-S888
		EIA/CCIR	EIA Only	NTSC/PAL
Number of Effective Pixels	NTSC(EIA)	320 x 240	510 x 492	306 x 240
	PAL(CCIR)	352 x 288		366 x 288
CMOS Image Sensor		1/4" B/W	1/4" B/W	1/5" PAL Color or 1/6" NTSC Color
Scanning System		2:1 INTERLACE		
Synchronization		INTERNAL		
Resolution (TV Lines)		240	380	240
S/N Ratio		more than 48dB		
Minimum Illumination		0.5 Lux / F 1.4	0.05 Lux / F 1.2	2 Lux / F 1.2
Electronic Shutter		1/50 - 1/6,000	1/50 - 1/63,000	1/50 - 1/57,000
Horizontal Sync Frequency		NTSC(EIA)-15.734kHz / PAL(CCIR)-15.625kHz		
Vertical Sync Frequency		NTSC(EIA)-60Hz / PAL(CCIR)-50Hz		
Gamma Consumption		0.45		
Video Output		1Vp-p , 75ohms Composite		
Audio Output		Frequency 20-16000Hz,S/N ratio more than 58dB SPL(at 1000Hz))(Ordering in advance)		
Storage Temperature		-30 to 60 Degree C		
Working Temperature		-10 to 45 Degree C		
Power Source		DC 7~12 V		DC 9~12 V
Power Current		50mA(max)		35mA(max)



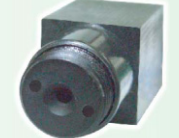
MO-Sxx8-3T



MO-Sxx8-4F



MO-S888-3T



MO-S888-4F

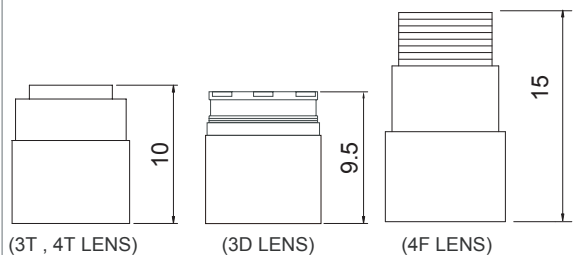
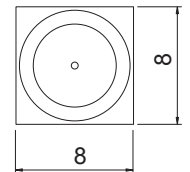

 Mini Camera
8 x 8 mm only

Ordering Information

Dimensions

MODEL	LENS	MIC	VIDEO SYSTEM
MO-S408-3D	3.9 / F2.8 (Slim)		CCIR / EIA
MO-S408-4F	4.0 / F2.0 (Flat)		
MO-S408-3T	3.1 / F3.4 (Slim)		
MO-S408-4T	3.9 / F3.9 (Slim)		
MO-S408A-xx		●	
MO-S788-3D	3.9 / F2.8 (Slim)		EIA Only
MO-S788-4F	4.0 / F2.0 (Flat)		
MO-S788-3T	3.1 / F3.4 (Slim)		
MO-S788-4T	3.9 / F3.9 (Slim)		
MO-S788A-xx		●	
MO-S888-3D	3.9 / F2.8 (Slim)		1/5" PAL / 1/6"NTSC
MO-S888-4F	4.0 / F2.0 (Flat)		
MO-S888-3T	3.1 / F3.4 (Slim)		
MO-S888-4T	3.9 / F3.9 (Slim)		
MO-S888A-xx		●	
MO-S1588-3D	3.9 / F2.8 (Slim)		1/4" CCIQ COLOR
MO-S1588-4F	4.0 / F2.0 (Flat)		
MO-S1588-3T	3.1 / F3.4 (Slim)		
MO-S1588-4T	3.9 / F3.9 (Slim)		
MO-S1588A-xx		●	
MO-S3588-3D	3.9 / F2.8 (Slim)		1/4" CCIQ II COLOR
MO-S3588-4F	4.0 / F2.0 (Flat)		
MO-S3588-3T	3.1 / F3.4 (Slim)		
MO-S3588-4T	3.9 / F3.9 (Slim)		
MO-S3588A-xx		●	

Lens unit diameter and height different for other lenses.Please inquire for details.



Unit:mm