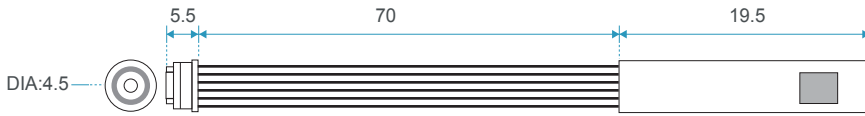


**Feature**

- Ø 4.5mm Only
- Compact size.
- Backlight compensation.
- High Quality Picture.
- High Performance.
- Outstanding Quality!



**Specification**

unit : mm (±0.5)

Model	MO-BS1204
Video system	NTSC & PAL
Number of effective pixels	640x 480 (NTSC & PAL)
Image sensor	1/12" Color CMOS CAMERA Module
Resolution(TV Lines)	400 TV Lines
S/N Ratio	more than 36dB
Minimum illumination	5LUX / F2.8
Electronic shutte	1/60~1/62500 SEC
Horizontal syncfrequency	NTSC -15.734kHz , PAL-15.625KHz
Vertical sync frequency	NTSC - 60Hz , PAL-50Hz
Camera consumption	0.45
Video output	1Vp-p , 75ohm composite
Built - in Lens	1.2mm / F2.8
Storage temperature	-30 to 60 Degree C
Working temperature	-10 to 45 Degree C
Power source	DC 3 ~ 5V
Power current	100 mA
Dimension (mm)	Ø 4.5 x 70 x 19.5(mm)



MO-BS1204 ▲

**Ordering information**

MODEL	MODULE TYPE	DIMENSION (mm)	LED	CONNECT
MO-B1204	BOARD TYPE MODULE	Ø 4.5 (mm)	X	3 WIRE OUT
MO-B1204L	BOARD TYPE MODULE	Ø 4.5 (mm)	WITH LED x 4	3 WIRE OUT
MO-BS1204	BOARD TYPE MODULE	Ø 4.5 (mm)	X	3 WIRE OUT
MO-T1204W	TUBE TYPE MODULE	Ø 5.4 (mm)	X	3 WIRE OUT
MO-T1204LW	TUBE TYPE MODULE	Ø 5.4 (mm)	WITH LED x 4	3 WIRE OUT
MO-T1204C	TUBE TYPE MODULE	Ø 5.4 (mm)	X	TUBE TYPE CABLE OUT
MO-T1204LC	TUBE TYPE MODULE	Ø 5.4 (mm)	WITH LED x 4	TUBE TYPE CABLE OUT
MO-R1204	TUBE TYPE MODULE	Ø 5.4 (mm)	X	SNAKE TYPE DC IN RCA OUT
MO-L1204	TUBE TYPE MODULE	Ø 5.4 (mm)	WITH LED x 4	SNAKE TYPE DC IN RCA OUT

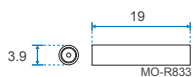
**NOTE :** MO-T1204W **W**: 3 WIRE  
MO-T1204C **C**: CABLE(OD 1.9mm , cable out : 75cm)

**Other information**

The Smallest Camera Of The World

**MO-R833**

1/18" (NTSC) Color CMOS Camera  
Pixels : 76800 Pixel



UNIT:mm



NEW CCIQ II

**MO-B3506**

1/4" Color CCIQ II Camera  
648 x 488 (NTSC & PAL)

DIA: 7.7 ONLY

