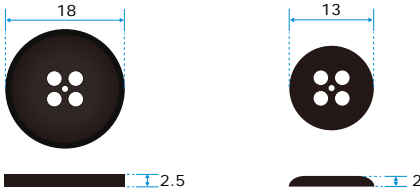
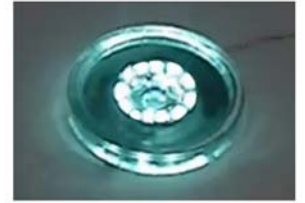


LENS COVER

BUTTON

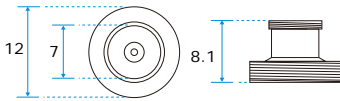


▲ LP4020L9YR-M7-F ▲ LP4320L9YR-M10-F ▲ LP4320L9YR-M12-F

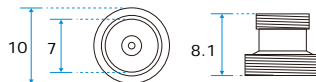


SPY INVISIBLE TOOL(IR LED X 12)
from IR camera video capture

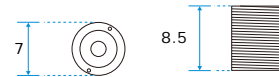
LENS(Ø12mm)



LENS(Ø10mm)



LENS(Ø7mm)



Specification

MODEL	FOCAL LENGTH	THREAD PITCH	Power input	NOTE
LP4020L9YR-M7-G	4.0mm /F2.0	M7 x P0.5	DC 3.3V for LED	With HIDDEN LENS Cover (LC-181L)
LP4320L9YR-M10-G	4.3mm /F2.0	M10 x P0.5		With HIDDEN LENS Cover (LC-181L)
LP4320L9YR-M12-G	4.3mm /F2.0	M12 x P0.5		With HIDDEN LENS Cover (LC-181L)
LP4020L9YR-M7-F	4.0mm /F2.0	M7 x P0.5		With HIDDEN LENS Cover (LC-131L)
LP4320L9YR-M10-F	4.3mm /F2.0	M10 x P0.5		With HIDDEN LENS Cover (LC-131L)
LP4320L9YR-M12-F	4.3mm /F2.0	M12 x P0.5		With HIDDEN LENS Cover (LC-1831L)
LC-181L	N/A	M7 x P0.5		With HIDDEN LENS Cover ONLY
LC-131L	N/A	M7 x P0.5		With HIDDEN LENS Cover ONLY

IR 940nm LED light x 12

Ordering in advance(Voltage Transformer)

Power Input: DC 3.4 ~5V
VT-0533 ▶ Power output: DC 3.3V
Dimension(mm): 2.3 x 7.9 mm

Ordering Information

MODEL	Built- in Lens	Sensor	Pixel	Res.	Illumination
MO-S9531	4.0mm /F2.0	1/3.7" Color CMOS	648 x 488 (NTSC-EIA/PAL/CCIR)	480 TV Lines	0.02 Lux / F1.2
MO-S9581				550 TV Lines	0.006 Lux / F1.2
MO-S9731		1/3.7" B/W CMOS			
MO-S9781					

IR 940nm LED light x 12



MO-S9581
MO-S9781

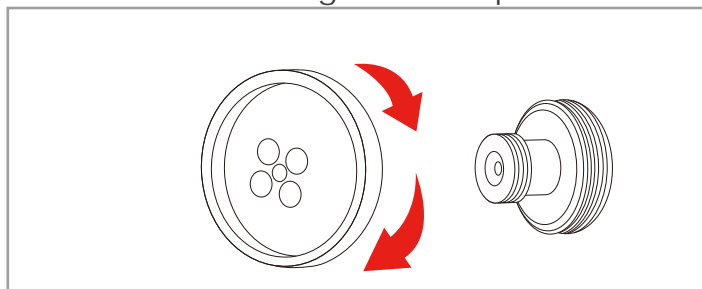


MO-S9531
MO-S9731



SPY INVISIBLE TOOL(IR LED X 12)
from IR camera video capture

Instruction Drawing & Description



Other Information

Mobile Mini Surveillance System
MP-469E + HS-C4310A = MPX-C4310A

