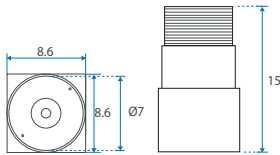
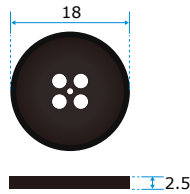


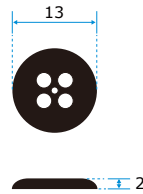
4F Lens



MO-S9581U
MO-S9781U



MO-S9531U
MO-S9731U



Feature

- High Sensitivity!
- High Performance.
- Spy camera + IR LED
- 550 TV lines
- Compact size

Specification

unit : mm (±0.5)

Model	MO-S9531U	MO-S9581U	MO-S9731U	MO-S9781U
Video system	NTSC / PAL		EIA / CCIR	
Number of effective pixels	648 x 488 (NTSC/EIA & PAL/CCIR)			
Image sensor	1/3.7" CMOS color Camera		1/3.7" CMOS B/W Camera	
Resolution(TV Lines)	480 TV Lines		550 TV Lines	
S/N Ratio	47.0 [dB]			
Max Dynamic Range	63.3 [dB]			
Sensor scan mode	progressive scan			
Minimum illumination	0.02 Lux/ F1.2		0.006 Lux/ F1.2	
Frame Rate	60 field/sec (NTSC/EIA) , 50 field/sec CVBS (PAL/CCIR)			
Sensitivity	8.2 [V/Lux.sec]			
Horizontal sync frequency	NTSC/EIA -15.734kHz , PAL/CCIR - 15.625kHz			
Vertical sync frequency	NTSC/EIA - 60Hz , PAL/CCIR - 50Hz			
Camera consumption	0.45			
Video output	1Vp-p , 75ohm composite			
Built-in Lens	4.0mm F2.0			
LED	IR LED 940 nm X 12			
Storage temperature	-30 to 60 Degree C			
Working temperature	-10 to 45 Degree C			
Power source	Camera input: DC 5~12V			
Power current	80 mA(max)-DC12V			
Dimension (mm)	8.6 x 8.6 mm			



MO-S9581U
MO-S9781U

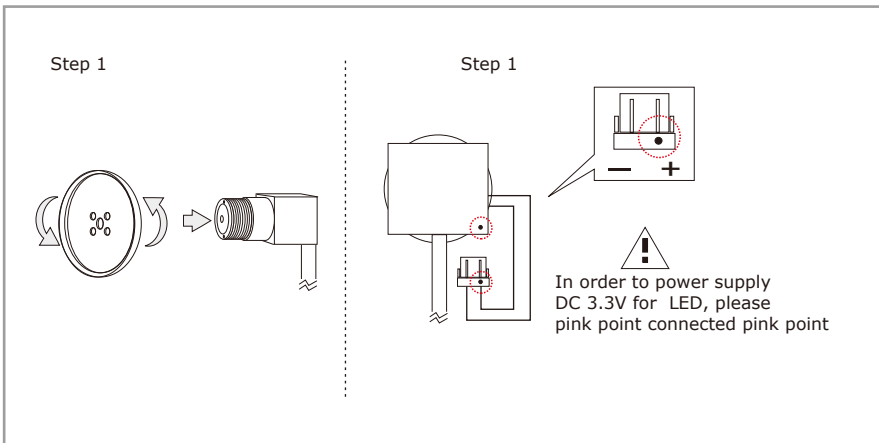


MO-S9531U
MO-S9731U



SPY invisible tool(IR LED X 12)
from IR camera video capture

Ordering information



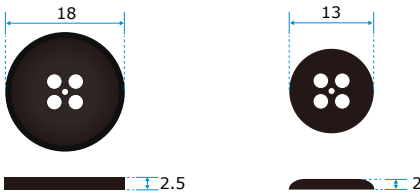
Other information

SPY INVISIBLE TOOL
IR 940nm LED light x 12

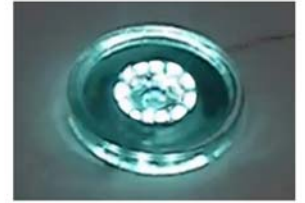
▲ LP4020L9YR-7-F ▲ LP4320L9YR-10-F ▲ LP4320L9YR-12-F

LENS COVER

BUTTON

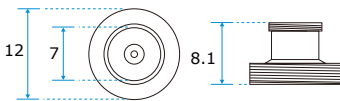


▲ LP4020L9YR-M7-F ▲ LP4320L9YR-M10-F ▲ LP4320L9YR-M12-F

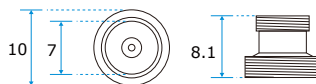


SPY INVISIBLE TOOL(IR LED X 12)
from IR camera video capture

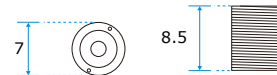
LENS(Ø12mm)



LENS(Ø10mm)



LENS(Ø7mm)



Specification

MODEL	FOCAL LENGTH	THREAD PITCH	Power input	NOTE
LP4020L9YR-M7-G	4.0mm /F2.0	M7 x P0.5	DC 3.3V for LED	With HIDDEN LENS Cover (LC-181L)
LP4320L9YR-M10-G	4.3mm /F2.0	M10 x P0.5		With HIDDEN LENS Cover (LC-181L)
LP4320L9YR-M12-G	4.3mm /F2.0	M12 x P0.5		With HIDDEN LENS Cover (LC-181L)
LP4020L9YR-M7-F	4.0mm /F2.0	M7 x P0.5		With HIDDEN LENS Cover (LC-131L)
LP4320L9YR-M10-F	4.3mm /F2.0	M10 x P0.5		With HIDDEN LENS Cover (LC-131L)
LP4320L9YR-M12-F	4.3mm /F2.0	M12 x P0.5		With HIDDEN LENS Cover (LC-1831L)
LC-181L	N/A	M7 x P0.5		With HIDDEN LENS Cover ONLY
LC-131L	N/A	M7 x P0.5		With HIDDEN LENS Cover ONLY

IR 940nm LED light x 12

Ordering in advance(Voltage Transformer)

Power Input: DC 3.4 ~5V
 VT-0533 ▶ Power output: DC 3.3V
 Dimension(mm): 2.3 x 7.9 mm

Ordering Information

MODEL	Built- in Lens	Sensor	Pixel	Res.	Illumination
MO-S9531	4.0mm /F2.0	1/4" Color CCIQ III	648 x 488 (NTSC-EIA/PAL/CCIR)	480 TV Lines	0.02 Lux / F1.2
MO-S9581				550 TV Lines	0.006 Lux / F1.2
MO-S9731		1/4" B/W CCIQ III			
MO-S9781					

IR 940nm LED light x 12



MO-S9581
MO-S9781

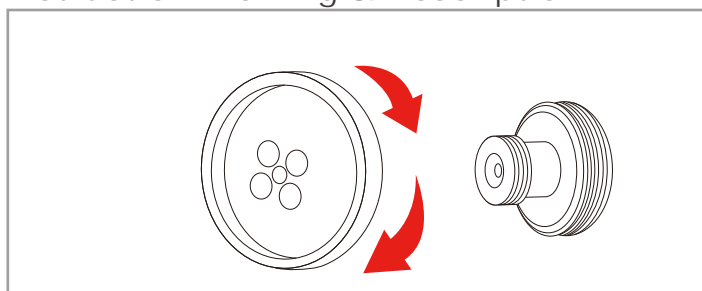


MO-S9531
MO-S9731



SPY INVISIBLE TOOL(IR LED X 12)
from IR camera video capture

Instruction Drawing & Description



Other Information

Mobile Mini Surveillance System
 MP-469E + HS-C4310A = MPX-C4310A

