

Unit : mm (± 0.5)

Feature

- Support CVBS HDMI, SDI input , and L/R audio input
- Manual channel

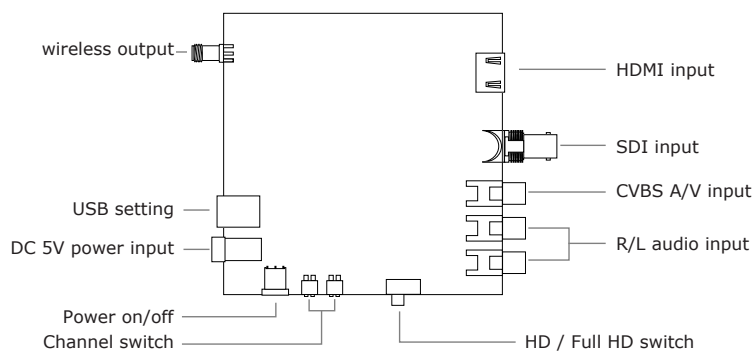
Specification

Model	DVB-T100	
Resolution input	CVBS: 720x480 /720x576 SDI : 1920x1080P /1280x720P /1920x1080i HDMI : 1920x080P /1280x720P /1920x1080i	
Resolution output	(HD Mode) All of resolution scale down /up into 1280x720P @15fps	
RF connector (Wireless / Wire Mode)	50-Ω BNC connectors , SMA Wire mode"HD capture card for iOS with lightning connector"	
Bandwidth	6MHz	
FFT	2K, 4K, 8K	
Compression	Video: MPEG2 ; Audio: MPEG2	
Modulation Constellation	QPSK, 16QAM, 64QAM @ DVB-T	
Code rate	1/2, 2/3, 3/4, 5/6, 7/8 @DVB-T	
Guard interval	1/4, 1/8, 1/16 or 1/32 @ DVB-T	
Modulator system	DVB-T @6Mhz ATSC @ 6Mhz	
RF Output Level	-12 dBm	
MER	25dB Typically	
Power	DC 5V, Power Consumption 6W	
Operating Temperature	0°C ~ 60°C	
Dimension (mm)	100.6(L) x 30.3(W) x 15(H)	
Weight	85g	
Default Channel Switch 4 629 Mhz (DVB-T 6MHZ) (Default: DVB-T , 6Mhz)		
	623 Mhz (DVB-T 6MHZ)	629 Mhz (DVB-T 6MHZ)
	623Mhz (ATSC 6MHZ)	629Mhz (ATSC 6MHZ)



DVB-T100

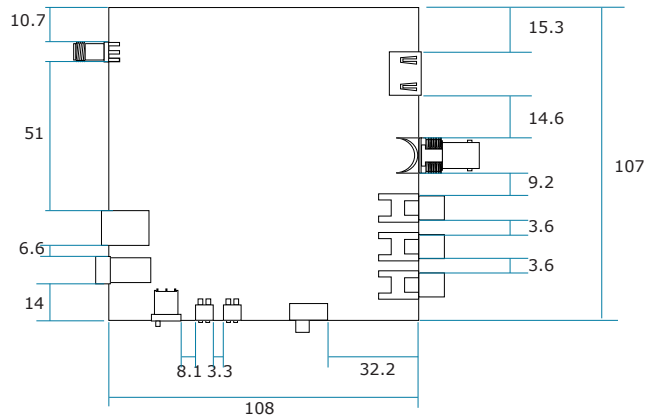
Instruction Drawing & Description



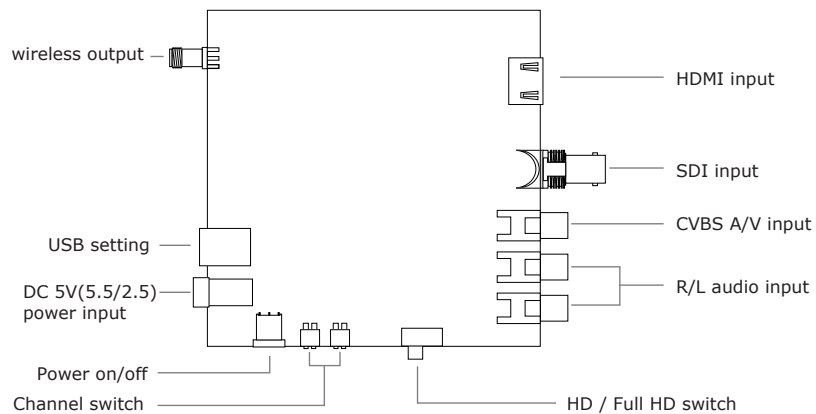
Wireless / Wire H.DMI SDI CVBS DTV



Dimension(mm±0.5)



Instruction Drawing & Description



Specification

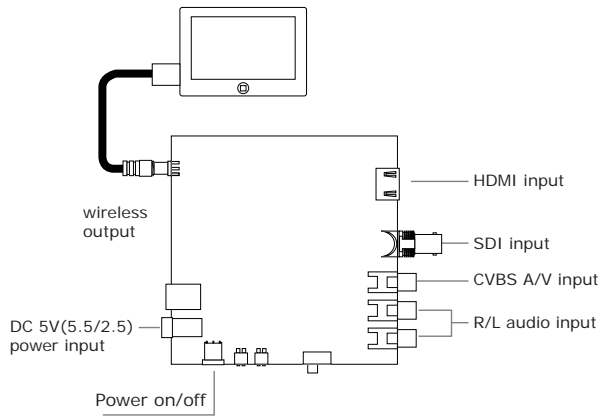
Model	DVB-T100	
Resolution input	CVBS: 720x480 /720x576 SDI : 1920x1080P /1280x720P /1920x1080i HDMI : 1920x080P /1280x720P /1920x1080i	
Resolution output	(HD Mode) All of resolution scale down /up into 1280x720P @15fps	
RF connector (Wireless / Wire Mode)	50-Ω BNC connectors , SMA Wire mode"HD capture card for iOS with lightning connector"	
Bandwidth	6MHz	
FFT	2K, 4K, 8K	
Compression	Video: MPEG2 ; Audio: MPEG2	
Modulation Constellation	QPSK, 16QAM, 64QAM @ DVB-T	
Code rate	1/2, 2/3, 3/4, 5/6, 7/8 @DVB-T	
Guard interval	1/4, 1/8, 1/16 or 1/32 @ DVB-T	
Modulator system	DVB-T @6Mhz ATSC @ 6Mhz	
RF Output Level	-12 dBm	
MER	25dB Typically	
Power	DC 5V, Power Consumption 6W	
Operating Temperature	0°C ~ 60°C	
Dimension (mm)	100.6(L) x 30.3(W) x 15(H)	
Weight	85g	
Default Channel Switch 4 629 Mhz (DVB-T 6MHZ) (Default: DVB-T , 6Mhz)		
	623 Mhz (DVB-T 6MHZ)	629 Mhz (DVB-T 6MHZ)
	623Mhz (ATSC 6MHZ)	629Mhz (ATSC 6MHZ)

Wireless / Wire H.DMI SDI CVBS DTV

How to preview

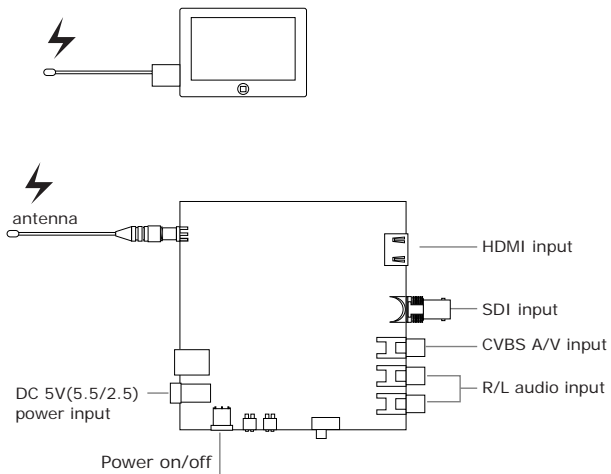
Method1:

1. Video device connect to DVB-T100.
2. Use cable to connect with iPad(or other device)and TV dongle and DVB-T100 .
3. Power switch turn on.

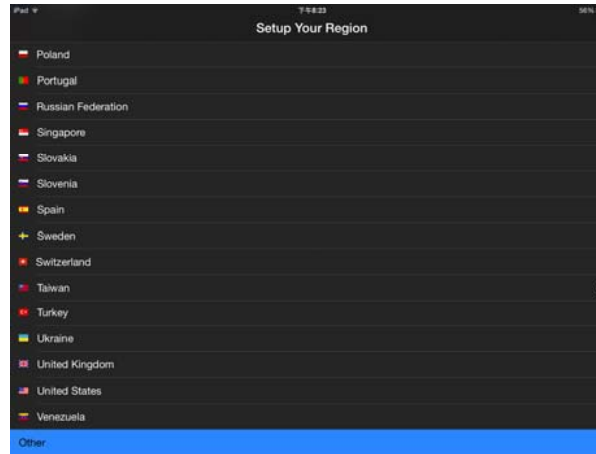


Method2:

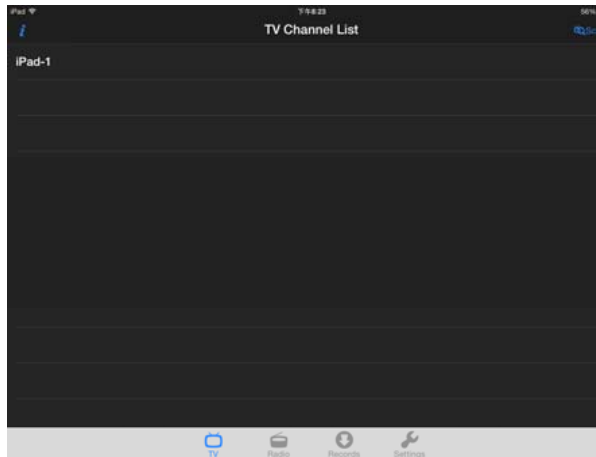
1. Video device connect to DVB-T100.
2. iPad(or other device)connect with TV dongle .
3. Power switch turn on.



Open APP and scan country

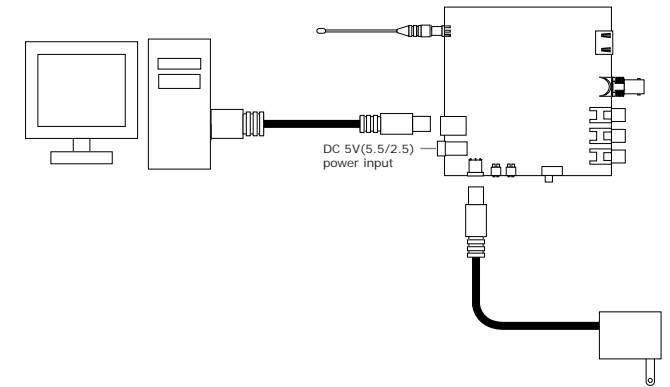


Find out the Channel number

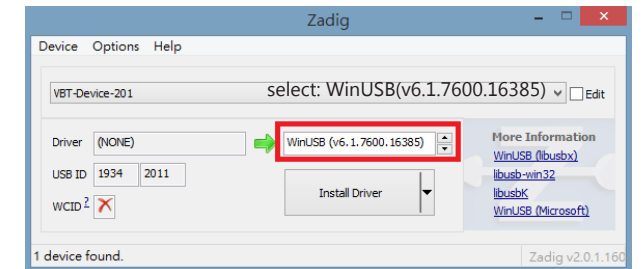
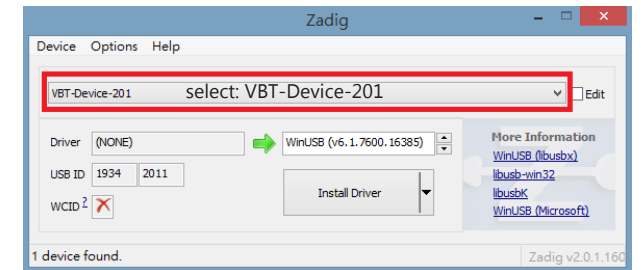


How to Install DVB-T Box driver

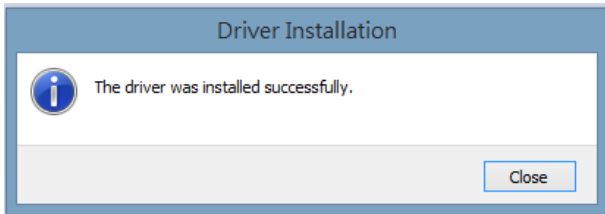
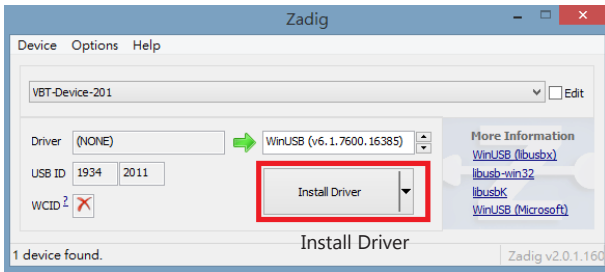
1. Use USB cable to connect with PC and DVB-T100 according to the diagram.



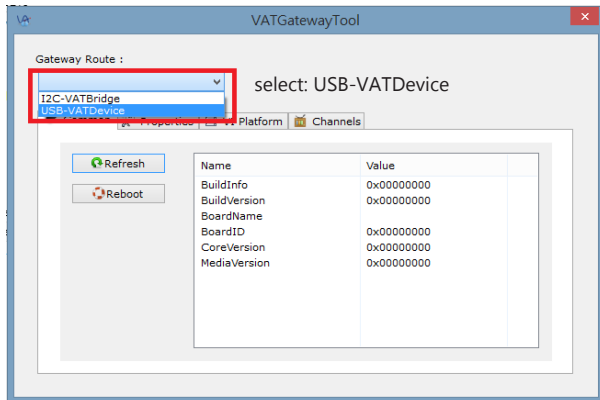
2. Run Zadig.exe and Install driver.



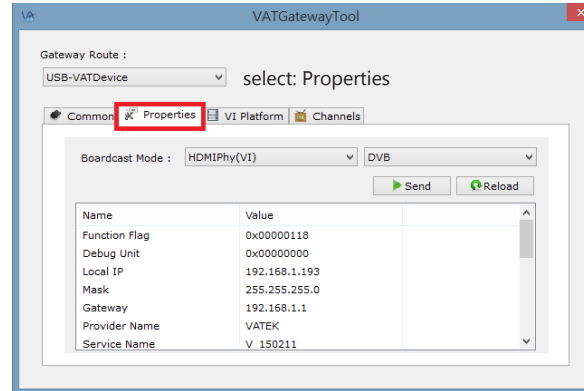
Wireless / Wire H.DMI SDI CVBS DTV



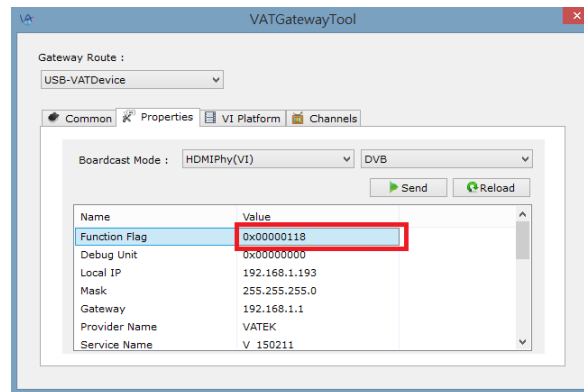
3. Run VATGatewayTool.exe



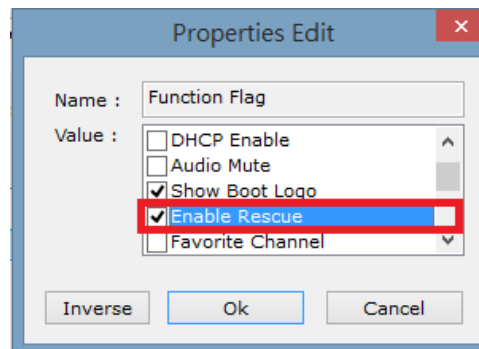
3-1. select: Properties



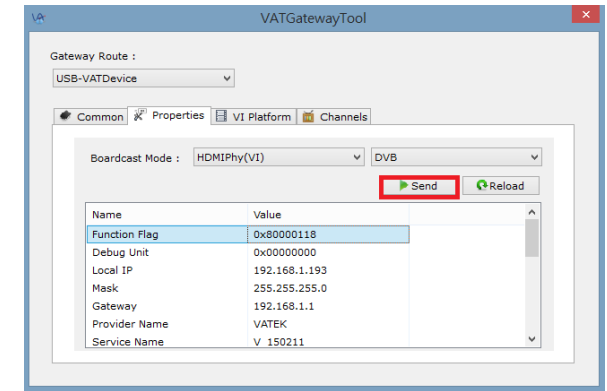
3-2. select: value of Function Flag



3-3. select: Enable Rescue and click ok.



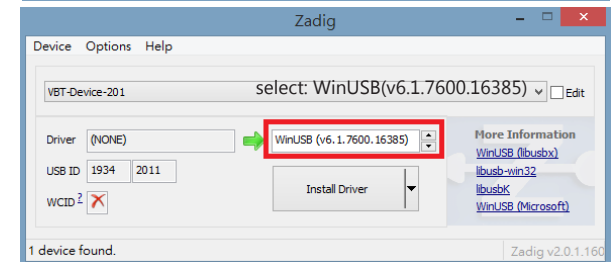
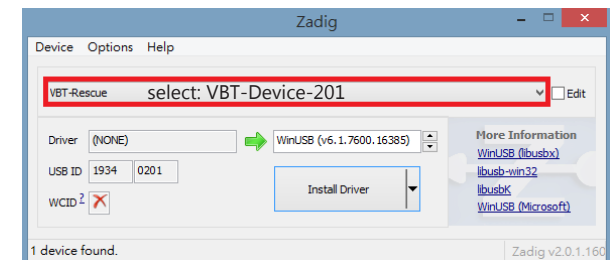
3-4. Send



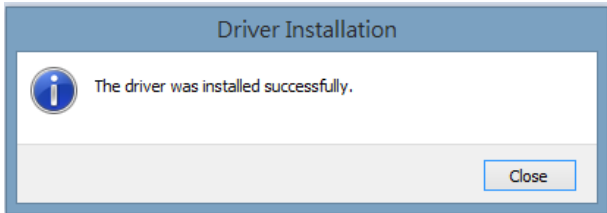
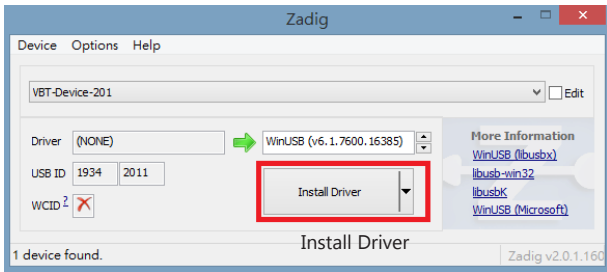
3-5. click "enter", and close VATGatewayTool.



4. Run Zadig.exe and Install driver.



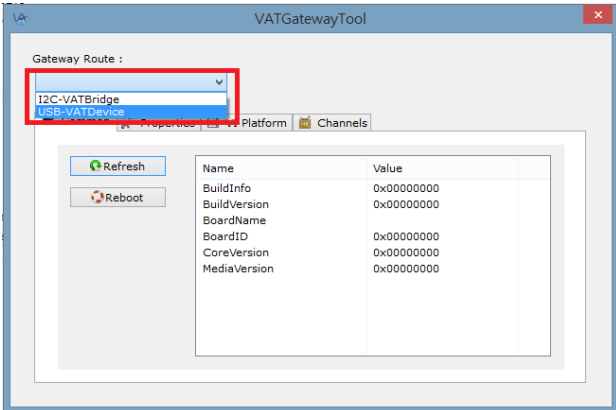
Wireless / Wire H.DMI SDI CVBS DTV



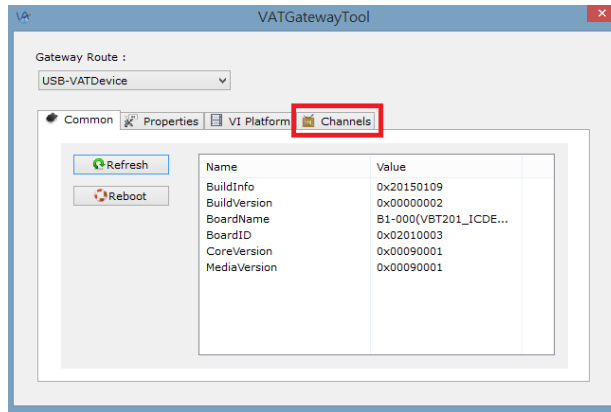
How to add favorite channel

1. RUN VATGatewayTool.exe

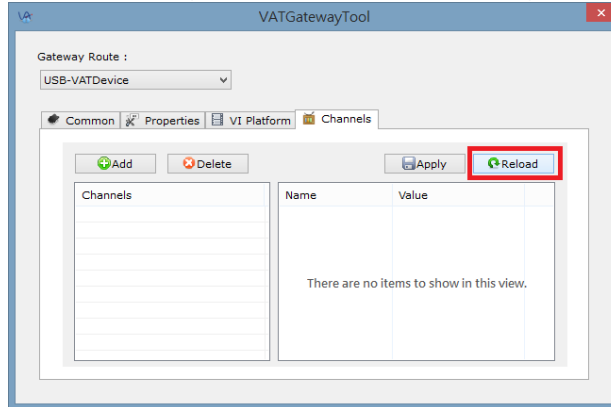
2. Select: USB-VATDevice



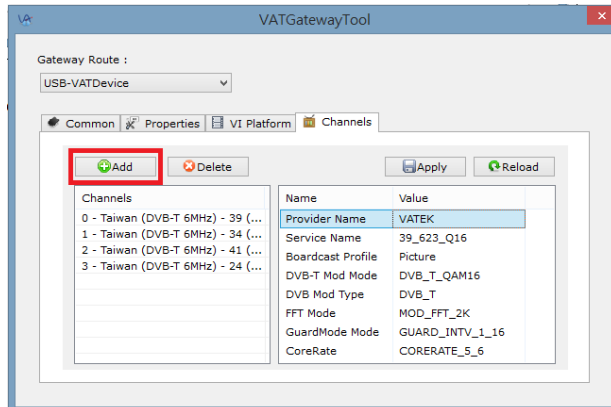
3. Select: channel



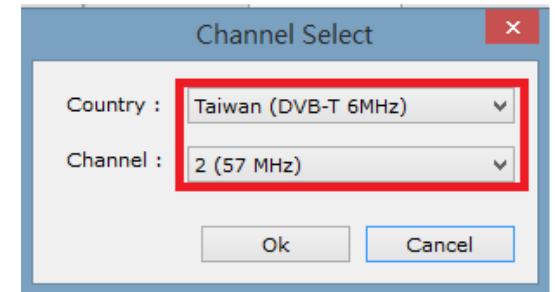
4. Click Reload and the preferred channels of DVB-T Box will show up.



5. click "add"



6. select "Country" and "Channel", then click "Ok"



7. click "Apply"

