

**Feature**

- High Sensitivity!
- High Performance & Super low light.
- Spy camera + IR LED
- 550 TV lines
- Compact size

**Specification**

unit : mm (±0.5)

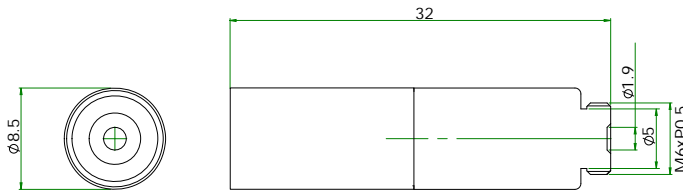
|                            |  |                            |
|----------------------------|--|----------------------------|
| Model                      | MX-T95510KL  | MX-T95710KL                |
| Video system               | NTSC / PAL   | EIA / CCIR                 |
| Number of effective pixels | 648 x 488 ( NTSC/EIA & PAL/CCIR )  |                            |
| Image sensor               | 4.86mm(1/3.7") CCIQIII color   | 4.86mm(1/3.7") CCIQIII B/W |
| Resolution(TV Lines)       | 480 TV Lines   | 550 TV Lines               |
| S/N Ratio                  | 47.0 [dB]  |                            |
| Max Dynamic Range          | 63.3 [dB]  |                            |
| Sensor scan mode           | progressive scan   |                            |
| Minimum illumination       | 0.03 Lux / 50IRE, 15 fps-LED turn off / 60cm)<br>0.03 Lux / 140IRE, 15 fps-LED turn on / 60cm) |                            |
| Sensitivity                | 8.2 [V/Lux.sec]  |                            |
| Frame Rate                 | 15 fps   |                            |
| Horizontal sync frequency  | NTSC/EIA - 15.734kHz , PAL/CCIR - 15.625kHz  |                            |
| Vertical sync frequency    | NTSC/EIA - 60Hz , PAL/CCIR - 50Hz  |                            |
| Gamma consumption          | 0.45   |                            |
| Video output               | 1Vp-p , 75ohm composite  |                            |
| Built-in Lens              | 4.3mm F2.0   |                            |
| LED                        | IR LED 940 nm x 8  |                            |
| Storage temperature        | -30 to 60 Degree C   |                            |
| Working temperature        | -10 to 45 Degree C   |                            |
| Power source               | Camera input: DC 5~12V   |                            |
| Power current              | 80 mA(max)-DC12V   |                            |
| Dimension (mm)             | Ø10 x 30 mm  |                            |



[CLICK TO VIDEO DEMO](#)

**Ordering information**

| Model            | LED               | Filter           | Frame rate  |
|------------------|-------------------|------------------|---|
| MX-T95710KL-43F  | IR 940 nm LED x 8 | B/W(AR filter)   | 15 fps- <b>fixed</b><br>(Hybrid sensitivity Super low light camera) |
| MX-T95510KL-43F  | IR 940 nm LED x 8 | Color(IR filter) |   |
| MX-T95710KLX-43F | IR 940 nm LED x 8 | B/W(XR filter)   |   |
| MX-T85710KLX-43F | IR 850 nm LED x 8 | B/W(XR filter)   |   |
| MX-T65510KL-43F  | White LED x 8     | Color(IR filter) |   |
| MX-T95710L-43F   | IR 940 nm LED x 8 | B/W(AR filter)   | 15~30 fps   |
| MX-T95510L-43F   | IR 940 nm LED x 8 | Color(IR filter) |   |
| MX-T95710LX-43F  | IR 940 nm LED x 8 | B/W(XR filter)   |   |
| MX-T85710LX-43F  | IR 850 nm LED x 8 | B/W(XR filter)   |   |
| MX-T65510L-43F   | White LED x 8     | Color(IR filter) |   |
| MX-T95510LK      | 55: color         |                  |   |
| MX-T95710LK      | 57: B/W           |                  |   |



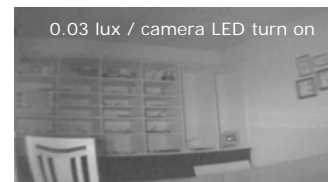
**Feature**

- High Sensitivity!
- High Performance & Super low light.
- Spy camera + IR LED
- 550 TV lines
- Compact size

**Specification**

unit : mm (±0.5)

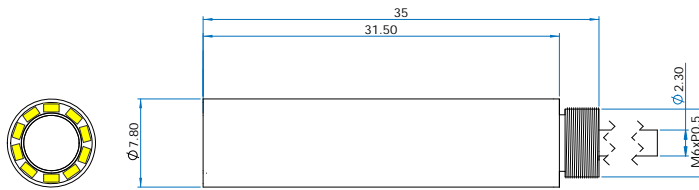
|                            |  |
|----------------------------|--|
| Model                      | MX-T95708KL  |
| Video system               | EIA / CCIR   |
| Number of effective pixels | 648 x 488 ( NTSC/EIA & PAL/CCIR )  |
| Image sensor               | 4.86mm(1/3.7") CCIQIII B/W   |
| Resolution(TV Lines)       | 550 TV Lines   |
| S/N Ratio                  | 47.0 [dB]  |
| Max Dynamic Range          | 63.3 [dB]  |
| Sensor scan mode           | progressive scan   |
| Minimum illumination       | 0.03 Lux / 50IRE, 15 fps-LED turn off / 60cm)<br>0.03 Lux / 140IRE, 15 fps-LED turn on / 60cm) |
| Sensitivity                | 8.2 [V/Lux.sec]  |
| Frame Rate                 | 15 fps   |
| Horizontal sync frequency  | NTSC/EIA - 15.734kHz , PAL/CCIR - 15.625kHz  |
| Vertical sync frequency    | NTSC/EIA - 60Hz , PAL/CCIR - 50Hz  |
| Gamma consumption          | 0.45   |
| Video output               | 1Vp-p , 75ohm composite  |
| Built-in Lens              | 4.3mm F2.0   |
| LED                        | IR LED 940 nm x 8  |
| Storage temperature        | -30 to 60 Degree C   |
| Working temperature        | -10 to 45 Degree C   |
| Power source               | Camera input: DC 5~12V   |
| Power current              | 80 mA(max)-DC12V   |
| Dimension (mm)             | Ø8.5 x 32 mm   |



**Ordering information**

| Model            | LED               | Filter           | Frame rate  |
|------------------|-------------------|------------------|---|
| MX-T95708KL-43F  | IR 940 nm LED x 8 | B/W(AR filter)   | 15 fps- <b>fixed</b><br>(Hybrid sensitivity Super low light camera) |
| MX-T95508KL-43F  | IR 940 nm LED x 8 | Color(IR filter) |   |
| MX-T95708KLX-43F | IR 940 nm LED x 8 | B/W(XR filter)   |   |
| MX-T85708KLX-43F | IR 850 nm LED x 8 | B/W(XR filter)   |   |
| MX-T65508KL-43F  | White LED x 8     | Color(IR filter) | 15~30 fps   |
| MX-T95708L-43F   | IR 940 nm LED x 8 | B/W(AR filter)   |   |
| MX-T95508L-43F   | IR 940 nm LED x 8 | Color(IR filter) |   |
| MX-T95708LX-43F  | IR 940 nm LED x 8 | B/W(XR filter)   |   |
| MX-T85708LX-43F  | IR 850 nm LED x 8 | B/W(XR filter)   |   |
| MX-T65508L-43F   | White LED x 8     | Color(IR filter) |   |
| MX-T95508LK      | 55: color         |                  |   |
| MX-T95708LK      | 5Z: B/W           |                  |   |

**Tube Type**



**Feature**

- High Sensitivity!
- High Performance & Super low light.
- 450 TV lines
- Compact size

**Specification**

unit : mm (±0.5)

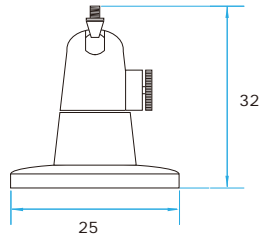
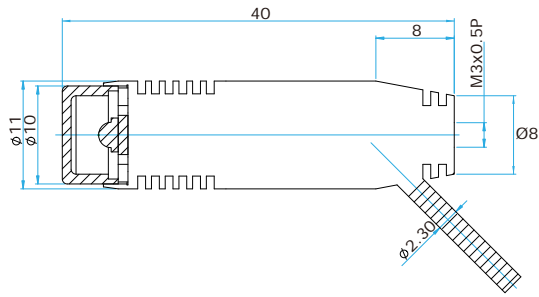
|                            |   |                |
|----------------------------|---|----------------|
| Model                      | MX-T97408LK                                   | MX-T97408L     |
| Video system               | EIA-NTSC / CCIR-PAL                           |                |
| Number of effective pixels | 640 x 480                                     |                |
| Image sensor               | 1/5" Hybrid Sensitivity CMOS B/W              |                |
| Resolution(TV Lines)       | 450 TV Lines                                  |                |
| S/N Ratio                  | 38 [dB]                                       |                |
| Max Dynamic Range          | 71 [dB]                                       |                |
| Sensor scan mode           | progressive scan                              |                |
| Minimum illumination       | 0.03 Lux / 50IRE, 15 fps                      |                |
| Sensitivity                | 8.2 [V/Lux.sec]                               |                |
| Frame Rate                 | 15fps   | 15fps or 30fps |
| Horizontal sync frequency  | NTSC/EIA -15.734kHz , PAL/CCIR - 15.625kHz    |                |
| Vertical sync frequency    | NTSC/EIA - 60Hz , PAL/CCIR - 50Hz             |                |
| Gamma consumption          | 0.45  |                |
| Video output               | 1Vp-p , 75ohm composite                       |                |
| Built-in Lens              | 4.3mm F2.0                                    |                |
| LED                        | IR 940nm x 10 (White LED, IR 850nm -optional) |                |
| Storage temperature        | -30 to 60 Degree C                            |                |
| Working temperature        | -10 to 45 Degree C                            |                |
| Power source               | Camera input: DC 5~12V                        |                |
| Power current              | 80 mA(max)-DC12V                              |                |
| Dimension (mm)             | Ø7.8x 35 mm                                   |                |

■ with camera and LED power switch



**Ordering information**

| Hybrid Sensitivity Series | Model             | Frame rate      | LED           | Output                | Lens       |                   |
|---------------------------|-------------------|-----------------|---------------|-----------------------|------------|-------------------|
| MX-                       | <b>B7407KW-</b>   | 15fps           | none          | 3 wires               | <b>2B</b>  | 2.69mm/F2.0 (71°) |
|                           | <b>B87407KLW-</b> |                 | IR 940nm x 10 |                       | <b>2V</b>  | 2.83mm/F3.9 (68°) |
|                           | <b>B97407KLW-</b> |                 | IR 940nm x 10 |                       | <b>3E</b>  | 3.0mm/F2.4 (65°)  |
|                           | <b>B7407W-</b>    | 15fps and 30fps | none          |                       | <b>3H</b>  | 2.92mm/F2.2 (66°) |
|                           | <b>B87407LW-</b>  |                 | IR 850nm x 10 |                       | <b>3K</b>  | 2.8mm/F3.9 (68°)  |
|                           | <b>B97407LW-</b>  |                 | IR 940nm x 10 |                       | <b>3M</b>  | 3.4mm/F2.8 (58°)  |
|                           | <b>T7408K-</b>    | 15fps           | none          | cable to 4 pin (male) | <b>3TC</b> | 3.5mm/F3.5 (57°)  |
|                           | <b>T87408KL-</b>  |                 | IR 850nm x 10 |                       | <b>3TF</b> | 3.5mm/F3.5 (57°)  |
|                           | <b>T97408KL-</b>  |                 | IR 940nm x 10 |                       | <b>3W</b>  | 2.84mm/F3.9(68°)  |
|                           | <b>T7408-</b>     | 15fps and 30fps | none          |                       | <b>3X</b>  | 3.4mm/F2.8(58°)   |
|                           | <b>T97408L-</b>   |                 | IR 940nm x 10 |                       | <b>43F</b> | 4.3mm/F2.0 (47°)  |
|                           | <b>T97408L-</b>   |                 | IR 940nm x 10 |                       | <b>6F</b>  | 6.0mm/F4.4 (34°)  |



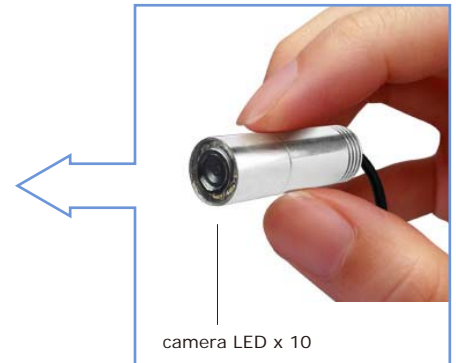
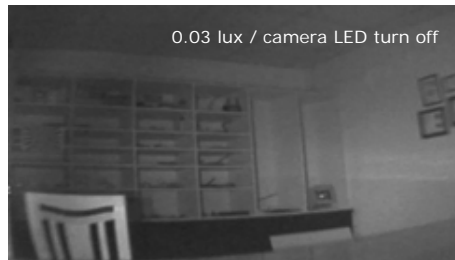
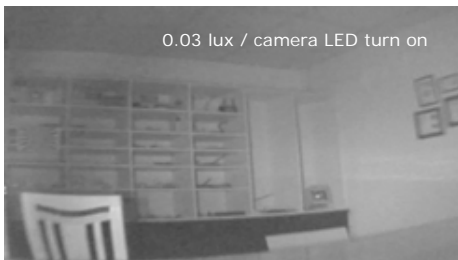
**Feature**

- High Power LED!
- Compact size

unit : mm (±0.5)

**Specification**

| Model                     | LS-11001E       | LS-11001E-940                       | LS-11001E-850      |
|---------------------------|-----------------|-------------------------------------|--------------------|
| LED light                 | White LED light | IR 940nm LED light                  | IR 850nm LED light |
| Wattage                   |                 | 2W (42 mil)                         |                    |
| Beam angle                |                 | 140°                                |                    |
| LED Operating Temperature |                 | -40°C~85°C                          |                    |
| Storage Temperature       |                 | -40°C~115°C                         |                    |
| Input voltage             |                 | DC 5~12V(350mA/DC 5V; 150mA/DC 12V) |                    |
| Dimension(mm)             |                 | Ø11 x 40                            |                    |



+

