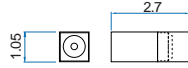


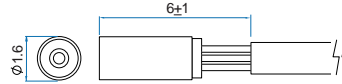
The Smallest

- High quality image, pixel is 400x400 @30fps and Low Power Consumption.
- Ultra-compact size, diameter is 1.4mm(PCB module).

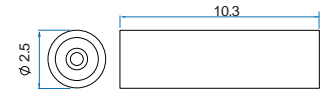
MO-B1001-120



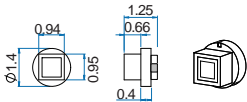
MO-B1001-91



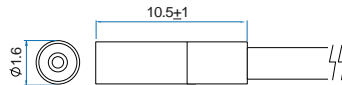
MO-V1001L-91



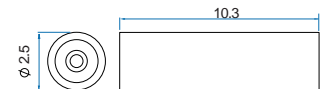
MO-B1001



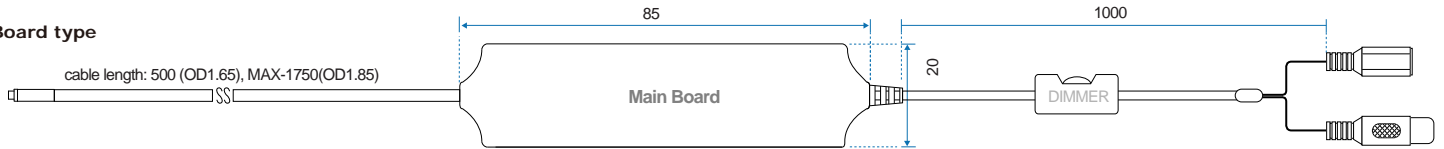
MO-T1001-120



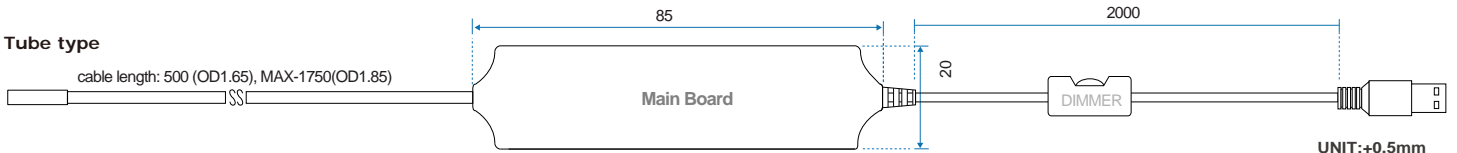
MO-V1001L-120



Board type



Tube type

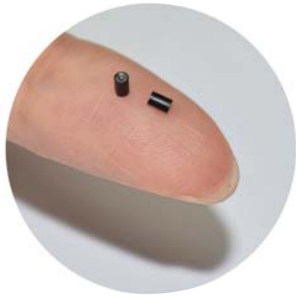


UNIT:±0.5mm

Specification

Model	MO-B1001	MD-B1001
Max. frame rate	400 x 400/30fps	
pixel size	1.75 μm x 1.75 μm	
Image sensor	1/18" Color CMOS Camera Module	
Image area	741 μm x 707 μm	
Scan mode	progressive	
Sensitivity	1000 mV/Lux-sec	
Dynamic range	67.1 dB @ 8x gain	
Storage temperature	-30 to 60 Degree C	
Working temperature	-10 to 45 Degree C	
Interface	RCA male/DC JACK	USB 2.0 (Compliant with USB Video Class 1.1 standard)
Output format	CVBS	YUV · MJPEG · H.264
Operating system	Windows7, windows8, Linux, Android	
Power source	DC 5~12V	DC 5V (USB)
Power current	120mA (w/o LED)	





Tiny Lens / Cable OD can be customized

Ø1.6mm lens with 91° wide angle was specially developed for the ultra mini Ø1.4mm PCB. Special cable made of unique material was also developed for better signal conduction. Maximum cable length can be as long as 140cm, cable OD can be customized as 1mm, 1.65mm, 1.85mm, depending on customers' requests.

Light Guide/ 3 pcs white LED

Excellent brightness from the 3 LED light maximally emit to the light guide. With dimmer switch to adjust brightness according to environment.



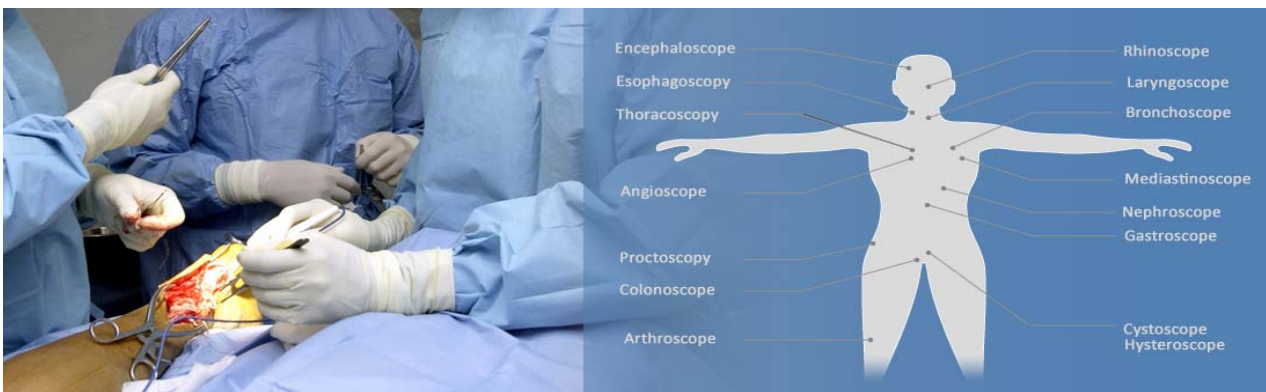
Analog signal / Digital signal output

Two types of signals (analog / digital) for your choice. Driver free for any OS(windows, MAC OS, Linux) as digital camera signal output version.



Module For Medical Application Ideas

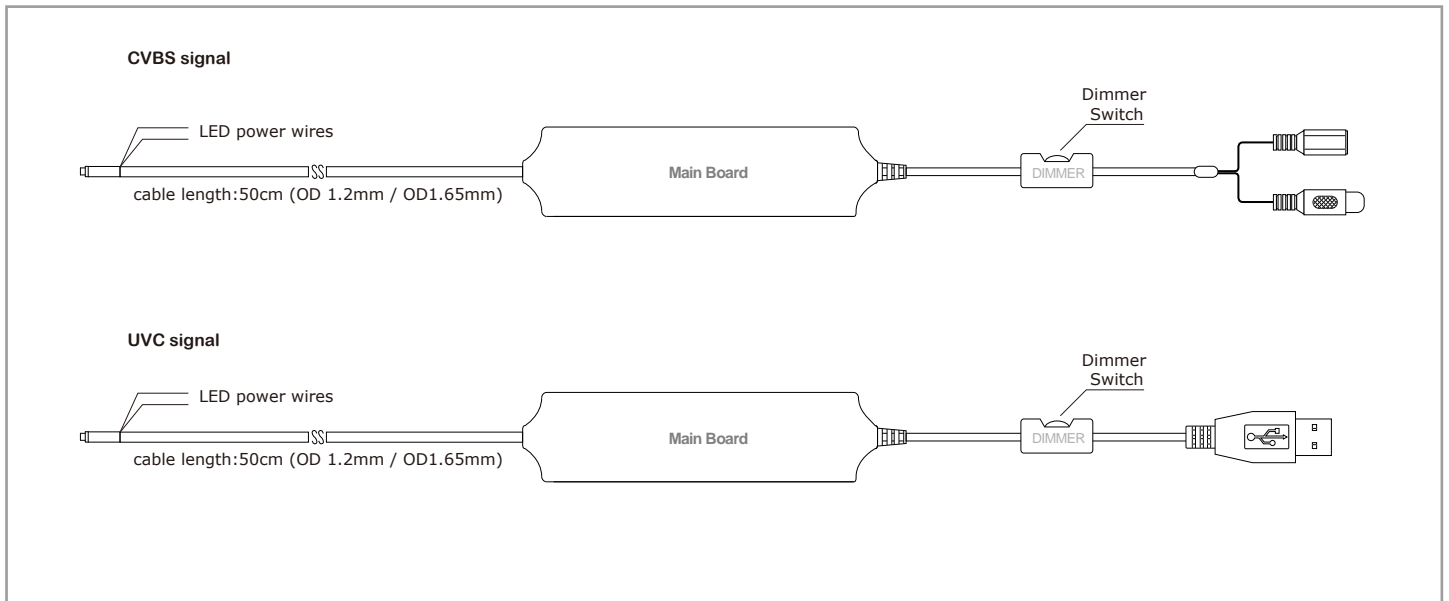
Tiny dimension perfect for medical endoscopes, borescopes or other small diameter inspection devices. Compact size camera enable easy and comfortable inspection process; instead of tedious inspection process caused by traditional larger size cameras. Using light guide to converge LED light, enhance brightness.



Ultra Compact Size, and Excellent Image Quality

1/18" CMOS (OV6946) image camera with 400x400 pixel and size is 1.6mm only, tiny dimension perfect for medical endoscopes, borescopes or other small diameter inspection devices.

Other information



Model	NO LED	LED	NO LED power wires	LED power wires	NO Dimmer Switch	Dimmer Switch	Cable OD.(mm)	Dimension (mm)	Lens	Signal
MO-B1001-A	•		•		•		OD:1.2	Ø1.4	N/A	CVBS
MO-B1001-91A	•		•		•		OD:1.2	Ø1.6	0.5mm/F3.6(91°)	
MO-B1001-116A(EOL)	•		•		•		OD:1.2	Ø1.6	F3.0(116°)	
MO-B1001-120A	•		•		•		OD:1.2	1.05x1.05	0.418mm/F5.0(120°)	
MO-T1001-91A	•		•		•		OD:1.2	Ø1.6	0.5mm/F3.6(91°)	
MO-T1001-116A(EOL)	•		•		•		OD:1.2	Ø1.6	F3.0(116°)	
MO-T1001-120A	•		•		•		OD:1.2	Ø1.6	0.418mm/F5.0(120°)	
MO-B1001-X	•			•		•	OD:1.35	Ø1.4	N/A	
MO-B1001-91X	•			•		•	OD:1.35	Ø1.6	0.5mm/F3.6(91°)	
MO-B1001-116X(EOL)	•			•		•	OD:1.35	Ø1.6	F3.0(116°)	
MO-B1001-120X	•			•		•	OD:1.35	1.05x1.05	F3.0(116°)	
MO-T1001-91X	•			•		•	OD:1.35	Ø1.6	0.5mm/F3.6(91°)	
MO-T1001-116X(EOL)	•			•		•	OD:1.35	Ø1.6	F3.0(116°)	
MO-T1001-120X	•			•		•	OD:1.35	Ø1.6	0.418mm/F5.0(120°)	
MO-B1001-B	•			•		•	OD:1.65	Ø1.4	N/A	
MO-B1001-91B	•			•		•	OD:1.65	Ø1.6	0.5mm/F3.6(91°)	
MO-B1001-116B(EOL)	•			•		•	OD:1.65	Ø1.6	F3.0(116°)	
MO-B1001-120B				•		•	OD:1.65	1.05x1.05	F3.0(116°)	
MO-T1001-91B	•			•		•	OD:1.65	Ø1.6	0.5mm/F3.6(91°)	
MO-T1001-116B(EOL)	•			•		•	OD:1.65	Ø1.6	F3.0(116°)	
MO-T1001-120B	•			•		•	OD:1.65	Ø1.6	0.418mm/F5.0(120°)	
MO-V1001L-91X		•				•	OD:1.35	Ø2.5	0.5mm/F3.6(91°)	
MO-V1001L-116X(EOL)		•				•	OD:1.35	Ø2.5	F3.0(116°)	
MO-V1001L-120X		•				•	OD:1.35	Ø2.5	0.418mm/F5.0(120°)	
MO-V1001L-91		•				•	OD:1.65	Ø2.5	0.5mm/F3.6(91°)	
MO-V1001L-116(EOL)		•				•	OD:1.65	Ø2.5	F3.0(116°)	
MO-V1001L-120		•				•	OD:1.65	Ø2.5	0.418mm/F5.0(120°)	

continue...

Model	NO LED	LED	NO LED power wires	LED power wires	NO Dimmer Switch	Dimmer Switch	Cable OD.(mm)	Dimension (mm)	Lens	Signal
MD-B1001-A	•		•		•		OD:1.2	Ø1.4	N/A	UVC
MD-B1001-91A	•		•		•		OD:1.2	Ø1.6	0.5mm/F3.6(91°)	
MD-B1001-116A(EOL)	•		•		•		OD:1.2	Ø1.6	F3.0(116°)	
MD-B1001-120A	•		•		•		OD:1.2	1.05x1.05	0.418mm/F5.0(120°)	
MD-T1001-91A	•		•		•		OD:1.2	Ø1.6	0.5mm/F3.6(91°)	
MD-T1001-116A(EOL)	•		•		•		OD:1.2	Ø1.6	F3.0(116°)	
MD-T1001-120A	•		•		•		OD:1.2	Ø1.6	0.418mm/F5.0(120°)	
MD-B1001-X	•			•		•	OD:1.35	Ø1.4	N/A	
MD-B1001-91X	•			•		•	OD:1.35	Ø1.6	0.5mm/F3.6(91°)	
MD-B1001-116X(EOL)	•			•		•	OD:1.35	Ø1.6	F3.0(116°)	
MD-B1001-120X	•			•		•	OD:1.35	1.05x1.05	F3.0(116°)	
MD-T1001-91X	•			•		•	OD:1.35	Ø1.6	0.5mm/F3.6(91°)	
MD-T1001-116X(EOL)	•			•		•	OD:1.35	Ø1.6	F3.0(116°)	
MD-T1001-120X	•			•		•	OD:1.35	Ø1.6	0.418mm/F5.0(120°)	
MD-B1001-B	•			•		•	OD:1.65	Ø1.4	N/A	
MD-B1001-91B	•			•		•	OD:1.65	Ø1.6	0.5mm/F3.6(91°)	
MD-B1001-116B(EOL)	•			•		•	OD:1.65	Ø1.6	F3.0(116°)	
MD-B1001-120B				•		•	OD:1.65	1.05x1.05	F3.0(116°)	
MD-T1001-91B	•			•		•	OD:1.65	Ø1.6	0.5mm/F3.6(91°)	
MD-T1001-116B(EOL)	•			•		•	OD:1.65	Ø1.6	F3.0(116°)	
MD-T1001-120B	•			•		•	OD:1.65	Ø1.6	0.418mm/F5.0(120°)	
MD-V1001L-91X		•				•	OD:1.35	Ø2.5	0.5mm/F3.6(91°)	
MD-V1001L-116X(EOL)		•				•	OD:1.35	Ø2.5	F3.0(116°)	
MD-V1001L-120X		•				•	OD:1.35	Ø2.5	0.418mm/F5.0(120°)	
MD-V1001L-91		•				•	OD:1.65	Ø2.5	0.5mm/F3.6(91°)	
MD-V1001L-116(EOL)		•				•	OD:1.65	Ø2.5	F3.0(116°)	
MD-V1001L-120		•				•	OD:1.65	Ø2.5	0.418mm/F5.0(120°)	

