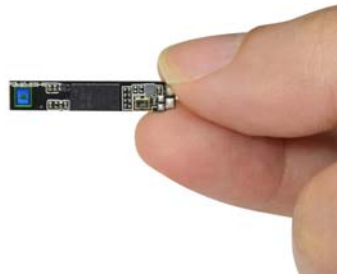


Side View Type



unit : mm (±0.5)



Feature

- High Sensitivity!
- High Performance & Super low light.
- Night Vision / Low Light Camera
- Compact size

Specification

Model	MX-BL1204	MX-BL1204K
Video system	NTSC / PAL	
Pixel Size	1.75 μm x 1.75 μm	
Active Image Size	1.148mm(H) X 0.861mm(V) X 1.43mm(D)	
Number of effective pixels	720 x 480(NTSC/ ITU-601) / 720 x 576(PAL/ITU-601)	
Image sensor	Hybrid Sensitivity CMOS color	
Resolution(TV Lines)	450 TV Lines	
S/N Ratio	38 dB	
Max Dynamic Range	4.7 mV/s @ 60°C	
Shutter	rolling shutter	
Sensitivity	960 mV/(Lux • sec)	
Frame Rate	15 or 30fps (auto)	15fps
Horizontal sync frequency	NTSC/EIA - 15.734kHz , PAL/CCIR - 15.625kHz	
Vertical sync frequency	NTSC/EIA - 60Hz , PAL/CCIR - 50Hz	
Gamma consumption	0.45	
Video output	1Vp-p , 75ohm composite	
Lens	1.33mm/F2.0 (H= 46° 41'; V= 35° 52'; D= 56° 31')	
Focus distance point	4.5mm (ordering in advance)	
LED	(white LEDx4 or IR 940nm LED or IR850nm LED - ordering in advance)	
Storage temperature	-30 to 60 Degree C	
Working temperature	-10 to 45 Degree C	
Power source	Camera input: DC 3.3V	
Power current	130 mA(max)-DC 3.3V	
Dimension (mm)	4.5x24 mm	

- Image quality controls: color saturation, hue, gamma, sharpness (edge enhancement), lens correction, defective pixel canceling, and noise canceling
- automatic image control functions: automatic exposure control (AEC), automatic white balance(AWB) and automatic black level calibration (ABLCL)
- Programmable controls for frame rate, AEC/AGC, mirror and flip, scaling and windowing

Ordering information

Lens Model	EFL / Fno.	FOV (with MX-B1204)	Image Circle	Thread	Note
1M13320IR-M3.5	1.33mm / F2.0	H= 46° 41'; V= 35° 52'; D= 56° 31'	2.36mm	M3.5xP0.2	normal
LP1532IR-M3.5	1.498mm / F3.2	H= 41° 56'; V= 32° 4'; D= 51° 2'	2.4mm	M3.5xP0.3	normal
LP1550IR-M3.5	1.498mm / F5.0	H= 41° 56'; V= 32° 4'; D= 51° 2'	2.4mm	M3.5xP0.3	Middle DOF
LP1570IR-M3.5	1.498mm / F7.0	H= 41° 56'; V= 32° 4'; D= 51° 2'	2.4mm	M3.5xP0.3	High DOF

Connector








Model	MX-V1204	JX-V1204	MXJ-V1204	MXQ-V1204	MX-F1204	Note
Image / Pin define						G : GND A : AUDIO P : DC POWER V : VIDEO
MX-V1204	V: camera with TUBE and dimmer switch					

Distortion Correction



Mobile digital video recorder + Camera

Order information (Various DVR can connect to MISUMI's camera as below:)

Image							
Model	MP-VRM203HD	MP-300E	MP-400E	MP-455E	MP-600SD	WF-AV100	WF-AV200
Display	N/A	2.5" TFT	2.5" TFT	2.5" LTPS TFT	3.5" touch screen TFT	N/A	N/A
External Memory	support up to SDHC 64GB	support up to SDHC 32GB	support up to SDHC 128GB	support up to SDHC 32GB, Built-in flash memory 128 MB	support up to SDHC 32GB	support up to SDHC 64B	support up to SDHC 64B
Function	1.Self-timer Mode, 2.PreviewOSD displaying icons , 3.Setup REC. , 4.Normal REC. , 5.Loop overwrite REC. 6.Motion detect, 7.Snapshot	1.PreviewOSD displaying icons , 2.Schedule REC. , 3.Normal REC. , 4.Loop overwrite REC. 5.IR Remote control 6.Snapshot 7.monitor sleep mode	1.PreviewOSD displaying icons , 2.Schedule REC. , 3.Normal REC. , 4.Loop overwrite REC. 5.IR Remote control 6.Snapshot 7.monitor sleep mode	1.PreviewOSD displaying icons , 2.Schedule REC. , 3.Normal REC. , 4.Snapshot, 5.monitor sleep mode	1.PreviewOSD displaying icons , 2.Schedule REC. , 3.Normal REC. , 4.Loop overwrite REC. 5.IR Remote control, 6.Motion detect, 7.Snapshot 8.monitor sleep mode	1.Normal REC.	1.Normal REC.
Compression	H.264	H.264	H.264	MPEG4	MPEG4	H.264	H.264
Video Input	analog signal input (NTSC/PAL)	analog signal input (NTSC/PAL)	analog signal input (NTSC/PAL)	analog signal input (NTSC/PAL)	analog signal input (NTSC/PAL)	analog signal input (NTSC/PAL)	analog signal input (NTSC/PAL)
Video Input Interface	Ø2.5mm phone plug	Ø2.5mm phone plug	Ø2.5mm phone plug	Mini 4 pin(female)	Ø2.5mm phone plug	Ø2.5mm phone plug	Ø2.5mm phone plug
File format	(.mov), (.jpg)	(.avi), (.jpg)	(.avi), (.jpg)	(.wav/.mp3/.asf/.wma), (.jpg)	(.avi), (.jpg)	(.avi)	(.avi)
Video resolution	HD 720p / max 30 fps	D1 720x480	D1 720x480	VGA 640 x 480	D1 720x480	D1 720x480	D1 720x480
Photo resolution	HD 720p	D1 720x480	D1 720x480	VGA 640 x 480	VGA 640 x 480	N/A	N/A
Date and time stamping	Support	Support	Support	Support	Support	Support	Support
WiFi function	N/A	N/A	N/A	N/A	N/A	Support	Support
App/Apk	N/A	N/A	N/A	N/A	N/A	Android / IOS	Android / IOS
Battery	N/A	NP-60 (1030mAh)	NP-60 (1030mAh)	NP-60 (1030mAh)	NP120 (2000mAh)	N/A	1100mAh
Power input/charging	5V/520mA	5V	5V	5V	5V	5V	5V
Dimension(mm)	32x68	63.5(L)x95.5(H)x21(W)	63.5(L)x95.5(H)x21(W)	63.5(L)x95.5(H)x21(W)	93(L)x70(H)x28(W)	54.5(L)x28(H)x10(W)	73(L)x36.6(H)x12(W)