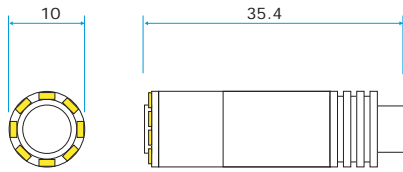


Tube Type



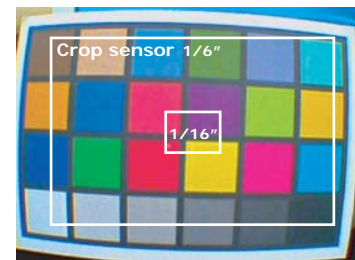
Feature

- High Sensitivity!
- High Performance & Super low light.
- Spy camera + IR LED
- Compact size

Specification

unit : mm (±0.5)

Model	MX-V5110KL
Video system	NTSC / PAL
Number of effective pixels	504x336 (NTSC); 504X400 (PAL)
Image sensor	1/16"(1/6") CCIQIII color, Image area 1.12mm(crop)
Resolution(TV Lines)	480 TV Lines
S/N Ratio	38 [dB]
Max Dynamic Range	58 [dB]
Sensor scan mode	progressive scan
Minimum illumination	0.02 Lux/ F1.2 (0.5 Lux / 74.5IRE, 15 fps)
Sensitivity	0.5[V/Lux.sec]
Frame Rate	15 fps
Horizontal sync frequency	NTSC/EIA - 15.734kHz , PAL/CCIR - 15.625kHz
Vertical sync frequency	NTSC/EIA - 60Hz , PAL/CCIR - 50Hz
Gamma consumption	0.45
Video output	1Vp-p , 75ohm composite
LED	White LED X 8
Storage temperature	-30 to 60 Degree C
Working temperature	-10 to 45 Degree C
Power source	Camera input: DC 5~12V
Power current	160 mA(max)-DC12V
Dimension (mm)	Ø10 x 35.4 mm



Customize image area (cropped sensor)



Ordering information

Lens Code	Lens	View angle	Thread pitch
2V	2.8mm/ F3.9	D= 28° 50'	M7 x P0.5
3T	3.4mm/F3.4	D= 26° 9'	M7 x P0.5
3M	3.4mm/F2.8	D= 23° 55'	M6 x P0.35
4H	4.5mm/F2.8	D= 20° 55'	M7 x P0.35
•4F	4.0mm/F2.0	D= 20° 24'	M7 x P0.5
•6F	6.38mm/F4.4	D= 13° 30'	M7 x P0.5
•8F	8.3mm/F2.4	D= 10° 24'	M7 x P0.5

Note

- For spy, telescope application(perfect read text & good image on screen)
- IR LED 940nm , IR LED 850nm- ordering in advance

Telescope application

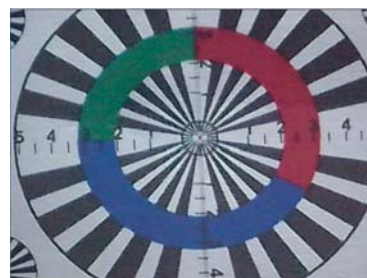


Image demo: 8F lens

