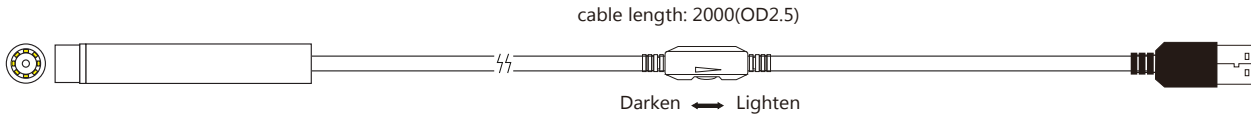


unit:±0.5mm



4 types connector - order in advance



USB A type



Mini USB B type

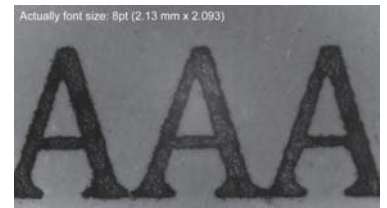


Micro USB B type



USB type C

Image demo



**Specification**

Model	MD-V31116XL-3025	FD-B31105
Snapshot & Freeze Function		Yes
Camera parameter setting on smartphone	Yes	Yes
Compatibility with wifi DVR MP-WF580K	Yes	Yes
Dimension(mm)	Ø16	
Max. frame rate	1920x1080 @ 15~30fps MJPEG 1280x720 960x540 848x480 640x480 640x360 424x240 320x240 320x180 176x144 160x120	
Pixel size	1.4 x 1.4 µm	
Image sensor	1/6" Digital CMOS B/W Camera Module	
Image area	2.7288x1.5498mm	
Scan mode	progressive	
Sensitivity	553 mV/(Lux-sec)	
Dynamic range	73.3 dB @ 15.5x gain	
UVC format	MJPEG	
Storage temperature	-30 to 60 Degree C	
Working temperature	-10 to 45 Degree C	
Interface	USB 2.0 (Compliant with USB Video Class 1.1 standard)	
Built-in Lens	30.0mm/F2.5	
Focus distance(FID)	90mm	
View angle	H= 5° 12'; V= 2° 58'; D= 5° 59'	
LED	white LED x 8	
Power source	DC 5V (USB)	
Power current	160mA	
Operating system	Windows XP, windows Vista, window 7, windows 8, windows 10, Linux, MAC OSX	