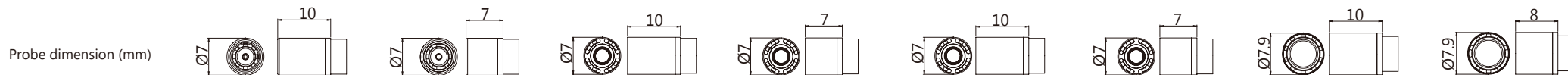
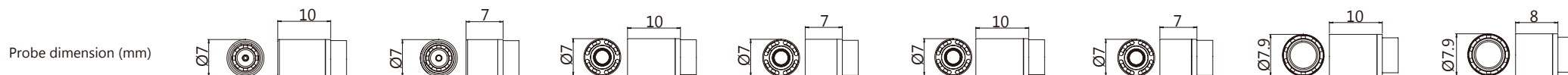


5MP / 80-xVD70x-363-1W SERIES

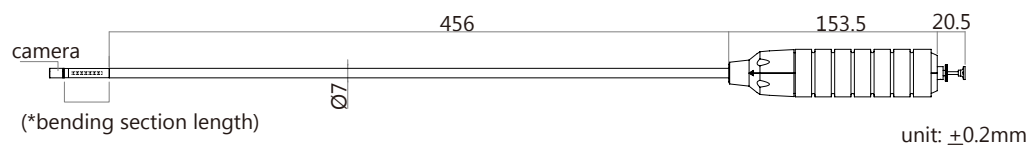


Model	80-VD700-363-1W-74 80-VD700-363-1W-81	80-VD708-363-1W-74 80-VD708-363-1W-81	80-VD700-363-1W-94	80-VD708-363-1W-94	80-VD700-363-1W-99	80-VD708-363-1W-99	80-VD700-363-1W-169	80-VD708-363-1W-169
Radius of gyration (at angle 90°)	35mm	28mm	35mm	28mm	35mm	28mm	35mm	28mm
Resolution	2592 x 1944		2592 x 1944		2592 x 1944		2592 x 1944	
Lens Angle	74° / 81°	5 MP	94°	5 MP	99°	5 MP	169°	5 MP
LED (High-intensity)	8 pcs		8 pcs		8 pcs		10 pcs	
Sensor Type	1/5" CMOS		1/5" CMOS		1/5" CMOS		1/5" CMOS	
Interface	USB 2.0 / USB 3.0		USB 2.0 / USB 3.0		USB 2.0 / USB 3.0		USB 2.0 / USB 3.0	

2MP / 80-xVD70x-311-1W SERIES

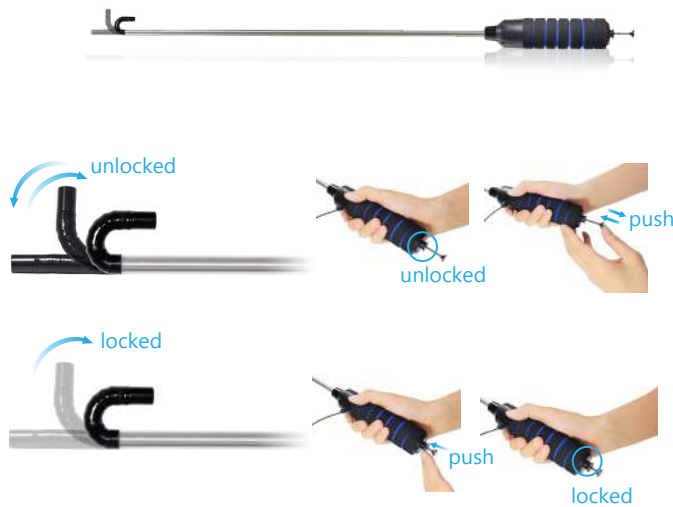


Model	80- <u>x</u> VD700-311-1W-77	80- <u>x</u> VD708-311-1W-77	80- <u>x</u> VD700-311-1W-88	80- <u>x</u> VD708-311-1W-88	80- <u>x</u> VD700-311-1W-93	80- <u>x</u> VD708-311-1W-93	80- <u>x</u> VD700-311-1W-158	80- <u>x</u> VD708-311-1W-158
Radius of gyration (at angle 90°)	35mm	28mm	35mm	28mm	35mm	28mm	35mm	28mm
Resolution	1920 x 1080		1920 x 1080		1920 x 1080		1920 x 1080	
Lens Angle	77°	2 MP	88°	2 MP	93°	2 MP	158°	2 MP
LED (High-intensity)	8 pcs		8 pcs		8 pcs		10 pcs	
Sensor Type	1/6" CMOS		1/6" CMOS		1/6" CMOS		1/6" CMOS	
Interface	USB 2.0 / USB 3.0		USB 2.0 / USB 3.0		USB 2.0 / USB 3.0		USB 2.0 / USB 3.0	



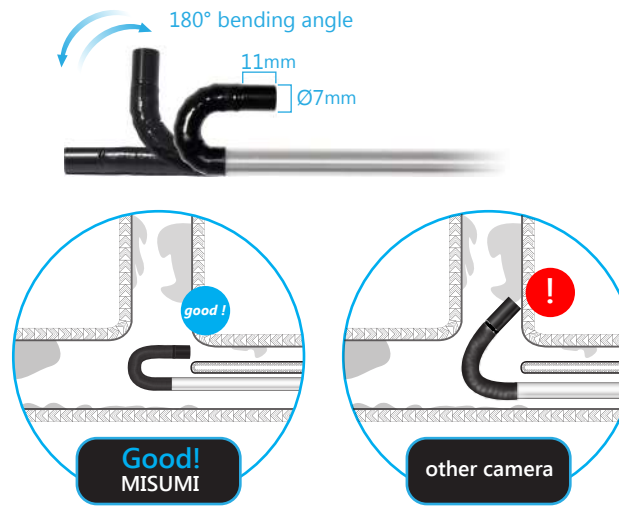
2 Methods to Control Camera Head!

Flexible control of camera articulation angle by using the push-handle. The articulation angle can be locked/unlocked at any degree



Short Camera Head!

Camera diameter is 7mm and length is 11mm. Short tube head can help you to inspect hard reachable places or angles.



High Brightness LED & Dimmer

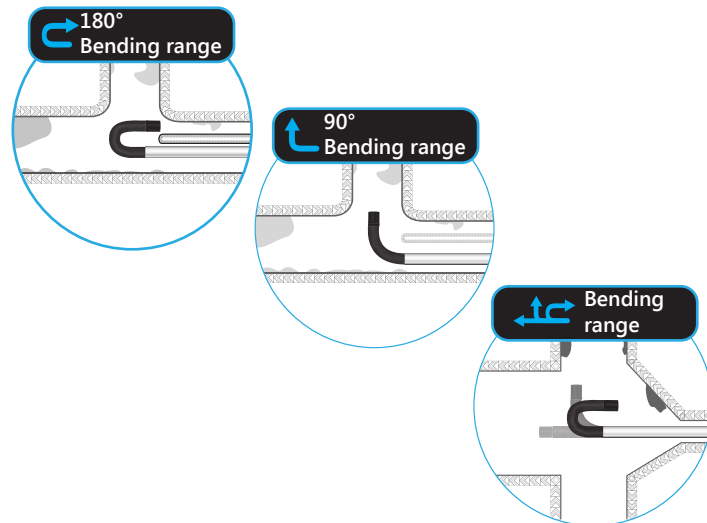
With high-brightness LEDs, the camera can capture clear images in a completely dark environment.

Camera is equipped with dimmer function to control LED brightness for micro focal distance or long focal distance, to prevent exposure in micro focal distance.



180-degree View Angle!

180-degree viewing angle makes it easier to check!



The Material of Camera Cable

Different material of the cable for different application.



IR LED & White LED Switch

Move the switch to change LED

White high-intensity LED x 5 / IR 850nm LED x 5 interlace (UV LED, IR LED, white LED -specify when ordering)



5MP / 80-xVD70x-363-1W SERIES

Outer Diameter (mm)	Ø7 / Ø7.9
Resolution	2592 x 1944 @ 30fps
Camera head material	stainless steel
Rigid length	45.6 cm
Probe length material	stainless steel
Articulations	1 way articulations
Bending section length(mm)	33 mm
Radius of gyration (at angle 90°)	28 mm (VD708 series) / 35 mm (VD700 series)
UVC format	MJPEG / YUV
Image area	1.12 µm x 1.12 µm
Sensitivity	3.6V/ (lux-sec)
Dynamic range	64.7 dB
LED	high-intensity white LED / IR 850nm / IR 940nm (selection)
LED dimmer	support
Snapshot & Freeze Function	support
Camera setting on smartphone	support
Compatibility with wifi DVR	support
Power source	DC 5V (USB) / 250mA
Storage temperature	-30 to 60 Degree C
Working temperature	-10 to 45 Degree C
Operating system	window 7, windows 8, windows 10, Linux, MAC OSX

2MP / 80-xVD70x-311-1W SERIES

Outer Diameter (mm)	Ø7 / Ø7.9
Resolution	1920x1080 @ 15~30fps / 60fps (specify when ordering)
Camera head material	stainless steel
Probe length	45.6 cm
Probe length material	stainless steel
Articulations	1 way articulations
Bending section length(mm)	33 mm
Radius of gyration (at angle 90°)	28 mm (VD708 series) / 35 mm (VD700 series)
UVC format	MJPEG / YUV / H.264 (specify when ordering)
Image area	1.4 µm x 1.4 µm
Sensitivity	553 mV/(Lux-sec)
Dynamic range	73.3 dB @ 15.5x gain
LED	high-intensity white LED / IR 850nm / IR 940nm (selection)
LED dimmer	support
Snapshot & Freeze Function	support
Camera setting on smartphone	support
Compatibility with wifi DVR	support
Power source	DC 5V (USB) / 190mA
Storage temperature	-30 to 60 Degree C
Working temperature	-10 to 45 Degree C
Operating system	Windows XP, windows Vista, window 7, windows 8, windows 10, Linux, MAC OSX

80-VD708-363-1W-74

Cable	Interface / Connector	Camera type / LED / *ROG	Resolution	Control	Lens angle
80 Rigid Tube	VD USB 2.0 type A	100 Color/white & IR 850nm/35mm	363 5MP	1W one-way Press	74 74°
	VM USB 2.0 micro B	700 Color/white/35mm			81 81°
	VT USB 2.0 type C	708 Color/white/28mm			94 94°
	SVD USB 3.0 type A				99 99°
	SVT USB 3.0 type C				169 169°

80-VD708-311-1W-77

Cable	Interface / Connector	Camera type / LED / *ROG	Resolution	Control	Lens angle
80 Rigid Tube	VD USB 2.0 type A	100 Color/white & IR 850nm/35mm	311 2MP	1W one-way Press	77 77°
	VM USB 2.0 micro B	700 Color/white/35mm			88 88°
	VT USB 2.0 type C	708 Color/white/28mm			93 93°
	HD USB 2.0 type A (H.264)				158 158°
	HM USB 2.0 micro B (H.264)				
	HT USB 2.0 type C (H.264)				
	SVD USB 3.0 type A				
SVT USB 3.0 type C					

*ROG: Radius of gyration (at angle 90°)

*This series have dimmer LED, snapshot, freeze frame function.

Outstanding Quality & UVC Signal Output !

High resolution and UVC signal output.
Compatible with PC, MAC and Android devices.



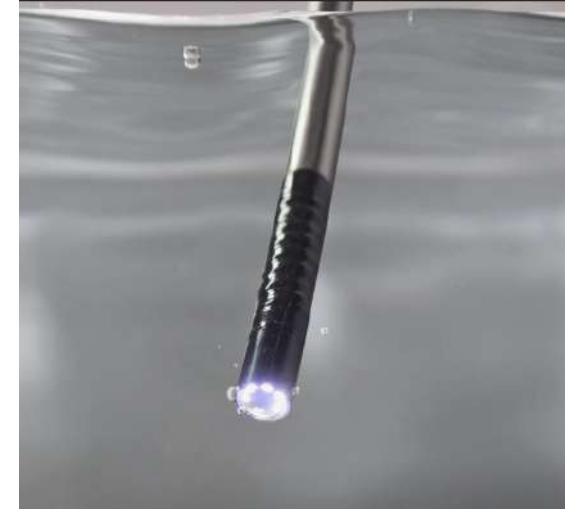
Freeze frame & Snapshot Function

Freeze frame function is perfect during inspection or surgery to pause image and do analysis.



Waterproof IP 67

Protected from total dust ingress.
Protected from long term immersion and 1 meter in depth.



UVC Signal Output !

The connector is available at USB A type,
Micro USB OTG B type, USB type C or customized for
specify when ordering.



Camera Parameter Adjustable

Camera parameter can be adjusted on the smartphone via the
Misumi app and PC viewer software AMCAP.

- Brightness ✨ —————
- Gain ↗ —————
- Contrast ● —————
- Gamma γ —————
- White Balance ☁ —————
- Exposure time ABS ☑ —————
- Sharpness ✨ —————
- Backlight Compensation ☑ —————
- HUE 🎨 —————
- Saturation ○ —————
- Mirror ▲ —————
- Flip ▶ —————
- Frame rate 📄 ————— 30fps
- Resolution 📄 ————— 1920x1080

