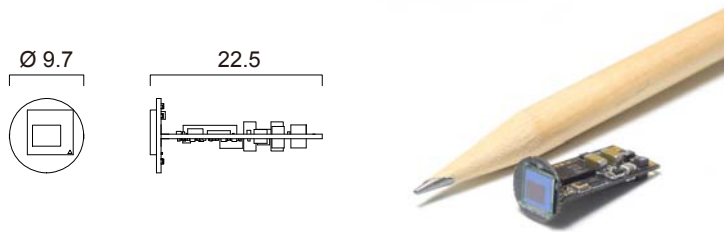


**Feature**

- Compact Size.
- Hi Resolution 1080p.
- High Performance.
- Outstanding Quality!
- Crop Sensor Camera

**B30809**  
No Lens



**Specification**

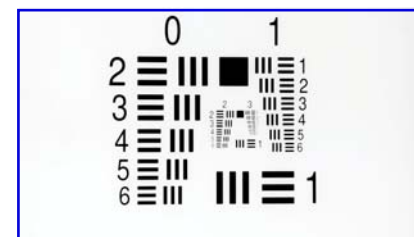
|                     |   |            |            |     |
|---------------------|---|------------|------------|-----|
| Model No.           | AHD-B30809  | CVI-B30809 | TVI-B30809 | N/A |
| Video Format        | AHD   | CVI        | TVI        | PVI |
| Image Sensor        | 1/5.8" CMOS Color Camera Module   |            |            |     |
| Resolution          | 1920 x 1080 @ 30 fps<br>(Convert 15 fps to 30 fps by duplicating every frame) |            |            |     |
| Pixel Size (µm)     | 1.4 x 1.4   |            |            |     |
| Image Area (mm)     | 2.69 x 1.51   |            |            |     |
| Scan Mode           | Progressive   |            |            |     |
| Sensitivity         | 690 mV / Sec  |            |            |     |
| Dynamic Range       | 68 dB   |            |            |     |
| S/N Ratio           | 36 dB   |            |            |     |
| Shutter             | Rolling   |            |            |     |
| Lens                | See Lens Information  |            |            |     |
| View Angle          | See Lens Information  |            |            |     |
| Focus Distance (mm) | Infinity  |            |            |     |
| LED                 | See LED Information   |            |            |     |
| Storage Temperature | -30 to 60 Degree C  |            |            |     |
| Working Temperature | -10 to 45 Degree C  |            |            |     |
| Power Supply        | DC 5~12V  |            |            |     |
| Power Current       | 80 mA   |            |            |     |

**AHD-B30809LC-158**

| SERIES   | CAMERA BODY  | DISPLAY                                | LED  |
|--|--|--|--|
| <b>AHD</b> AHD<br><b>CVI</b> CVI<br><b>TVI</b> TVI                               | <b>Front View</b><br><b>B</b> Board Type<br><b>VB</b> Board Type + Dimmer<br><b>T</b> Tube Type<br><b>V</b> Tube Type + Dimmer | <b>30809</b> Color<br><b>308M9</b> B/W | <b>L</b> White LED<br><b>LH</b> High-Intensity White LED<br><b>L8</b> IR 850 nm LED<br><b>L9</b> IR 940 nm LED |
| CABLE  |  | LENS                                   |  |
| <b>N/A</b> Cable + Connector<br><b>C</b> Cable + Wires Out<br><b>W</b> Wires Out |  | <b>Code</b>                            | <b>Specification</b>   |
|  |  |  | <b>Thread</b>  |
|  |  |  | <b>View Angle</b>  |
|  |  | <b>158</b>                             | 1.523 mm / F 4.8<br>1.523 mm / F 6.0<br>1.523 mm / F 8.0   |
|  |  | <b>120</b>                             | 1.06 mm / F 4.5<br>M 4 x P 0.2   |
|  |  | <b>93</b>                              | 1.5 mm / F 4.0<br>1.5 mm / F 5.7<br>M 2.2 x P 0.25   |
|  |  | <b>88</b>                              | 1.55 mm / F 4.0<br>1.55 mm / F 5.7<br>1.55 mm / F 8.0<br>M 4 x P 0.2   |
|  |  | <b>88M</b>                             | 1.86 mm / F 4.0<br>1.86 mm / F 5.0<br>1.86 mm / F 6.0<br>M 4 x P 0.2   |
|  |  | <b>77</b>                              | 1.83 mm / F 2.0<br>1.83 mm / F 5.0<br>1.83 mm / F 8.0<br>M 4 x P 0.2   |
|  |  | <b>52</b>                              | 3.4 mm / F 2.8<br>3.4 mm / F 6.0<br>M 6 x P 0.35   |

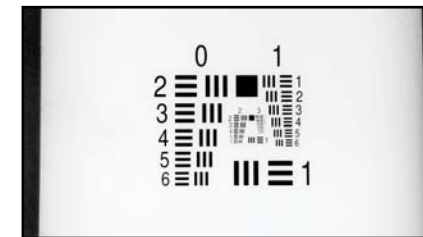
\* IR 940nm or IR 850nm LED is suggested to choose B/W camera type.  
\* Camera with LED light source is suggested to use lens with larger F-Stop number.

\*The same focus distance



**B30809 Crop Sensor Camera**

- ✓ Image zoom in
- ✓ View angle is smaller



**Others Full Frame Camera**