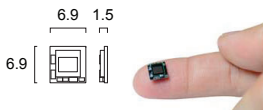
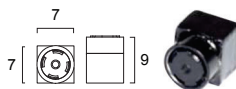


Unit: ± 0.5 mm

**MO-B44877**  
(Board Type)



**MO-S44877-3X**  
(Forming Type)



**MO-S44888-2V**  
(Forming Type)



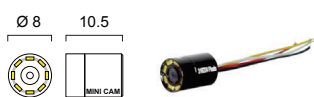
**MO-S44877-2E**  
(Forming Type)



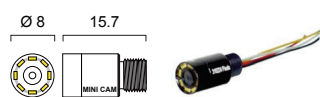
**MO-B44808**  
(Board Type)



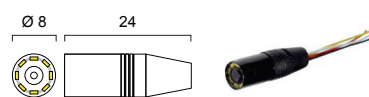
**MO-T44808SWL-3S**  
(LED / Wires Out)



**MO-T44808WL-3S**  
(LED / Wires Out)



**MO-T44808MWL-3S**  
(LED / Wires Out)



**MO-T44808SL-3S**  
(LED / Cable + Wires Out)



**MO-VT44808SL-3S**  
(Dimmer LED / Mini 4 Pin)



**MO-VT44808YL-3S**  
(Snake Type / Dimmer LED)



**Camera Parameter Adjustable (UTC Controller)  
UTC-200 (Sold Separately)**

Five buttons function for exposure, WB, Day & Night, image & setup, function setup, reset.  
(enter, up, down, left, right) Toggles



**MO-T44808SWL-2S**

SERIES	CONNECTOR	CAMERA BODY	DISPLAY	TUBE SIZE
<b>M</b> Basic	<b>CVBS Signal</b> O Mini 4 Pin J Phone Jack Q M8 Waterproof F RCA / DC	<b>44877 / 44808</b> B Board Type <b>44877 / 44888</b> S Forming Type <b>44808</b> T Tube Type V Tube Type +Dimmer	<b>44877</b> Color <b>448M77</b> B/W <b>44808</b> Color <b>448M8</b> B/W <b>44888</b> Color <b>448M88</b> B/W	<b>44808</b> S Ø 8 x 10.5 N/A Ø 8 x 15.7 M Ø 8 x 24

CABLE	LED	LENS			
<b>W</b> Wires Out <b>C</b> Cable + Wires Out <b>Y</b> Memory flexible metal conduit <b>N/A</b> Cable + Connector	<b>L</b> White LED <b>L9</b> IR 940 nm <b>L8</b> IR 850 nm	<b>Code</b>	<b>Specification</b>	<b>Thread</b>	<b>Angle</b>
<b>* W</b> No LED 3 Wires With LED 4 Wires <b>* Y</b> With Handlebar (Snake Type)		<b>2S</b>	2.1 mm / F 2.5	M 7 × P 0.5	140°
		<b>2ES</b>	2.3 mm / F 2.6	M 5.5 × P 0.35	110°
		<b>2E</b>	2.3 mm / F 2.6	M 7 × P 0.5	110°
		<b>3K</b>	2.8 mm / F 3.9	M 5.5 × P 0.35	77°
		<b>3W</b>	2.8 mm / F 3.9	M 7 × P 0.5	77°
		<b>2V</b>	2.83 mm / F 3.9	M 7 × P 0.5	76°
		<b>3S</b>	3.4 mm / F 3.4 3.4 mm / F 7.0	M 5.5 × P 0.35	66°
		<b>3X</b>	3.4 mm / F 2.8	M 6 × P 0.35	66°
		<b>3X6</b>	3.4 mm / F 6.0	M 6 × P 0.35	66°
		<b>3T</b>	3.47 mm / F 3.7	M 7 × P 0.5	65°
		<b>3TC</b>	3.5 mm / F 3.5	M 7 × P 0.5	65°
		<b>3TF</b>	3.5 mm / F 3.5	M 7 × P 0.5	65°
		<b>3A</b>	3.6 mm / F 4.5	M 7 × P 0.35	64°
		<b>4T</b>	3.9 mm / F 3.9	M 7 × P 0.35	59°
		<b>4E</b>	4.0 mm / F 2.0	M 7 × P 0.35	58°
		<b>4C</b>	4.0 mm / F 2.0	M 7 × P 0.5	58°
		<b>8F</b>	8.3 mm / F 2.4	M 7 × P 0.35	30°

\* IR 940nm or IR 850nm LED is suggested to choose B/W camera type.  
\* Camera with LED light source is suggested to use lens with larger F-Stop number.

**Connector Information**



NOTE: G GND A AUDIO P DC POWER V VIDEO

**Specification**

Model No.	B44877	B44808	S44888
Dimensions (mm)	6.9 x 6.9	Ø 7.7	8.6 x 8.6
UTC Function	Support		
Video Format	NTSC / PAL		
Image Sensor	1/4" CMOS Color Camera Module		
Resolution (TV Lines)	400		
Pixel	640 x 480		
Pixel Size (µm)	5.6 x 5.6		
Image Area (mm)	3.58 x 2.69		
Scan Mode	Progressive		
Sensitivity	17.1 V/Lux.sec		
Dynamic Range	65 dB		
S/N Ratio	48.7 dB		
Shutter	Rolling		
Horizontal Sync Frequency	15.734 kHz (NTSC) / 15.625 kHz (PAL)		
Vertical Sync Frequency	60 Hz (NTSC) / 50 Hz (PAL)		
Frame Rate	60 fields / sec. (NTSC), 50 fields / sec. (PAL)		
Gamma Consumption	0.45		
Video Output	1Vp-p , 75 ohms Composite		
Storage Temperature	-30 to 60 Degree C		
Working Temperature	-10 to 45 Degree C		
Power Supply	DC 3.3 V	DC 5~12 V	
Power Current	80 mA		

**Feature**

- Lightweight and Compact
- Ideal Tool for Endoscope, Surveillance
- LED Brightness Control